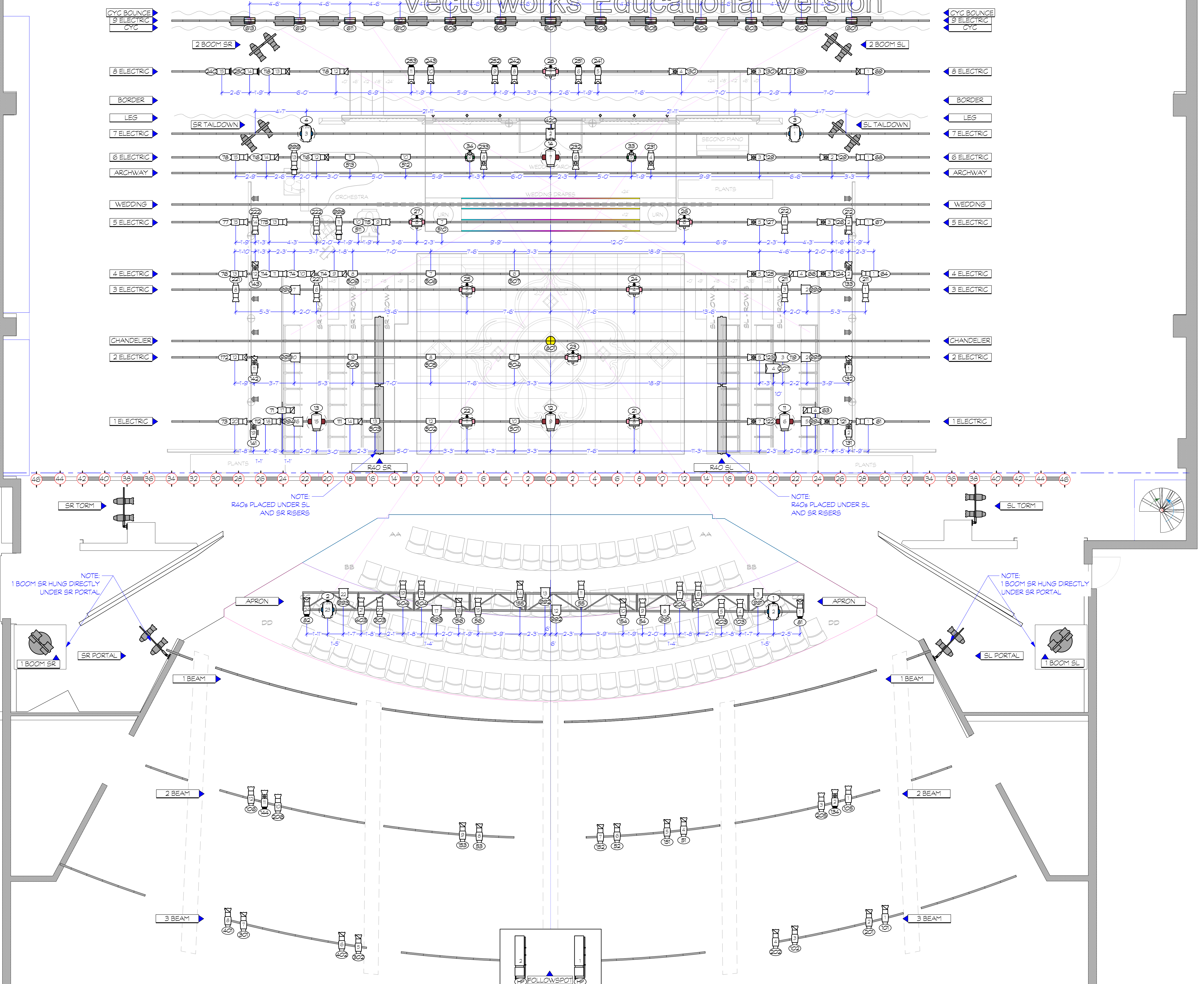


30'-0"	Cyc Bounce	54
23'-0"	8th Electric	33
30'-0"	Cyc	33
41'-0"		31
40'-0"		30
23'-0"	8th Electric	29
30'-0"	Border	28
30'-0"	Legs	27
28'-10"	7th Electric	26
25'-10"	6th Electric	25
25'-10"	Archway	24
00'-00"		23
00'-00"		22
00'-00"		21
00'-00"	Wedding Drapes	20
25'-10"	5th Electric	19
00'-00"		18
00'-00"		17
00'-00"		16
00'-00"		15
25'-10"	4th Electric	14
25'-10"	3rd Electric	13
00'-00"		12
00'-00"		11
25'-10"	Chandelier	10
25'-10"	2nd Electric	9
00'-00"		8
00'-00"		7
00'-00"		6
25'-10"	1st Electric	5
00'-00"		4
00'-00"		3
00'-00"		2
3'-04"	Main Drapes	1
0'-00"	US Elevator Edge	0



INSTRUMENT LIST		
Symbol	Description	Count
	Ayrton Straddle Profile @630 W	4
	GLP Impression S500 @750 W	4
	GLP Impression X5 @710 W	8
	Chauvet Rogue R1 Wash @161 W	4
	Altman Spectra Cyc @100w	13
	ETC Source 4 19deg @575 W	15
	ETC Source 4 26deg @575 W	60
	ETC Source 4 36deg @575 W	44
	ETC Source 4 36deg 750 W @750 W	13
	ETC Source 4 50deg 750 W @750 W	13
	ETC Source 4 70deg 750 W @750 W	2
	Altman PAR 64 WFL @1 W	2
	Selecon Compact 6' Fresnel @0.75 W	12
	ETC Source 4 Fresnel @750 W	16
	Light Instr USITT PAR MR-16 @65 W	12
	Light Instr USITT 10BP @1000 W	13
	zNestled Iris 2 Vert Top @30 W	15
	Light Instr ADJ Pinpoint 38 @30 W	16
	Altman R40 4 Circ 6ft @12 W	4
	Robert Juliat Topaze 1119 @1200 W	2
	USITT Practical Symbol @0 W	10
ACCESSORY LIST		
Symbol	Description	Count
	6.25in Top Hat	38
SFX LIST		
Symbol	Description	Count
	Look Solutions Unique 2.1 @1500 W	1

Typical Notation	
	Unit Number
	Chaming

- General Notes**
- 1) MEASUREMENTS MADE FROM CENTER OF PIPE UNLESS OTHERWISE NOTED
  - 2) ALL UNITS ARE TO HAVE APPROPRIATE FOCUS SLACK AND APPROPRIATE SAFETY HARDWARE
  - 3) PLEASE HAVE SPARE R119 & R132 AVAILABLE AT FOCUS
  - 4) ALL SIDE-ARMED OVERHEAD UNITS HUNG 1'-00" FROM SIDEARM CLAMP
  - 5) ALL FROST SHOULD BE PLACED ON THE SIDE CLOSEST TO LENS OF FIXTURE

THIS DRAWING REPRESENTS DESIGN INTENT, VISUAL CONCEPTS, AND CONSTRUCTION SUGGESTIONS ONLY. IT DOES NOT REPLACE THE KNOWLEDGE AND ADVICE OF A LICENSED STRUCTURAL ENGINEER.

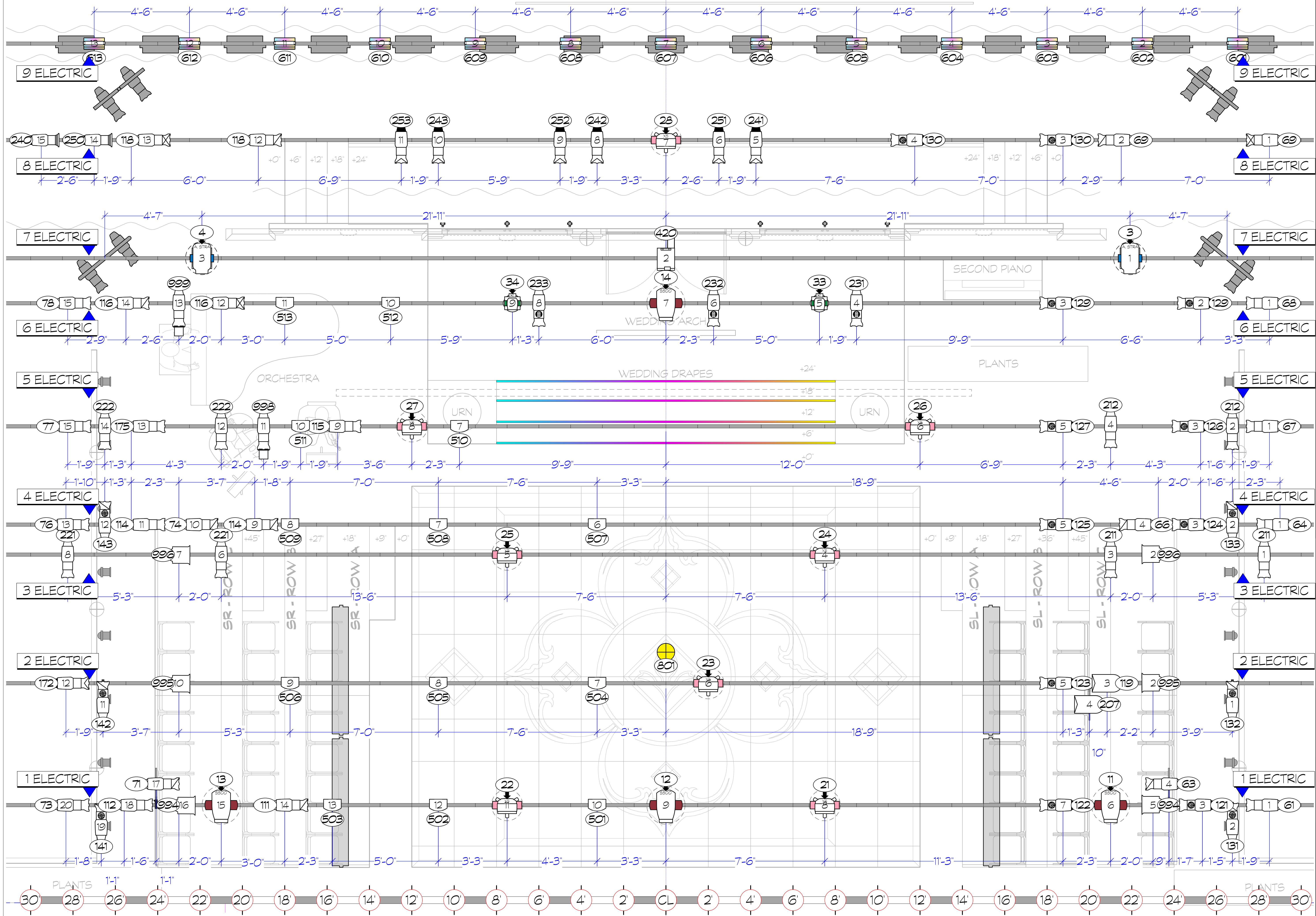
THE DESIGNER IS UNQUALIFIED TO DETERMINE STRUCTURAL APPROPRIATENESS OF THIS DESIGN AND WILL NOT ASSUME RESPONSIBILITY FOR IMPROPER ENGINEERING, IMPLEMENTATION, OR HANDLING OF THE ELEMENTS OF THIS DESIGN.

THE IMPLEMENTATION OF THIS DESIGN MUST COMPLY WITH THE MOST STRINGENT APPLICABLE FEDERAL AND LOCAL SAFETY AND FIRE CODES.

Directed By: Danielle Kay  
 Lighting Design By: Em Moore  
 +1 (415) 450 5198

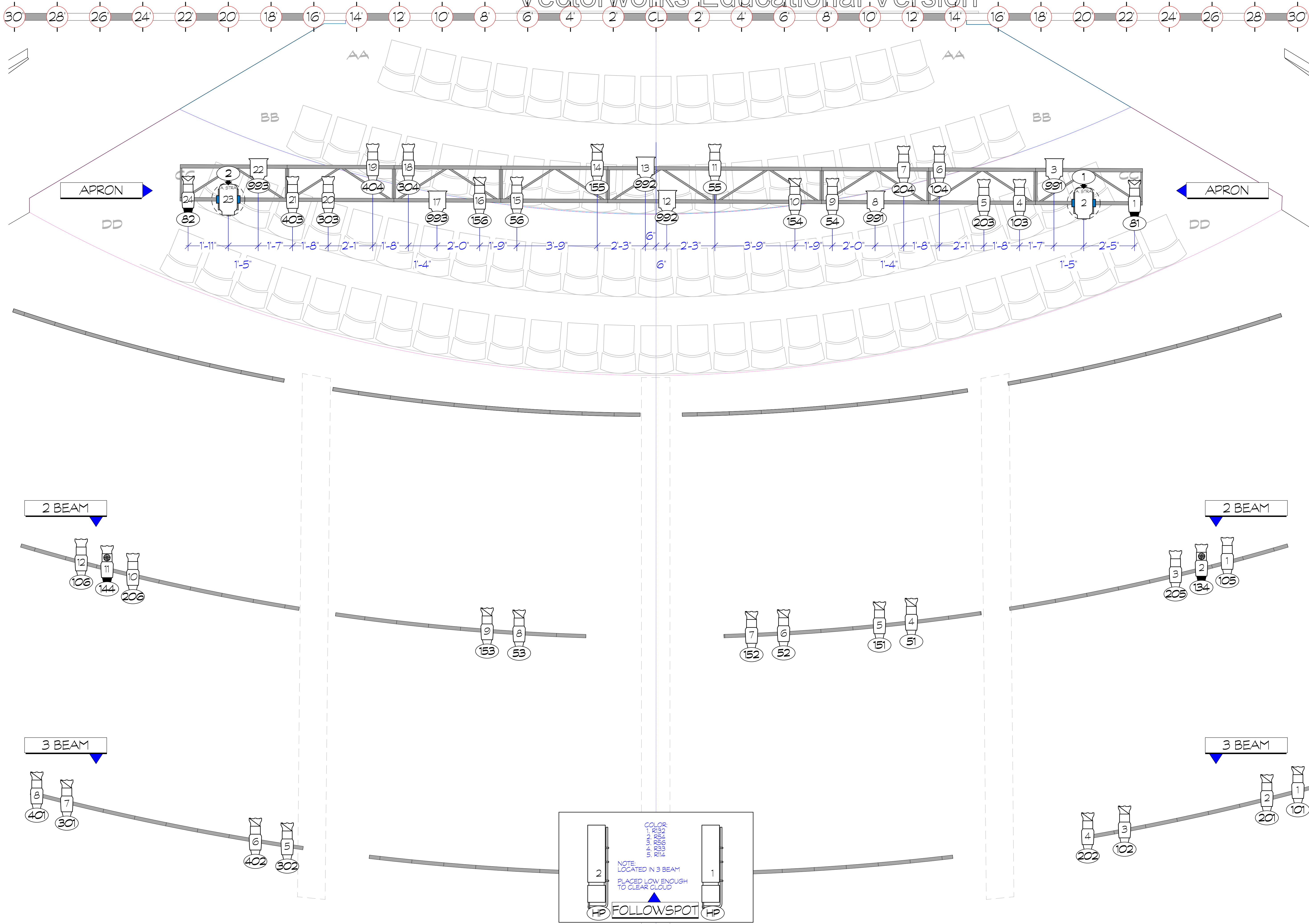
**EMMA: NO ONE BUT HERSELF**  
 Revision No. 1 January 19th 2026  
 405 Hilgard Ave,  
 Los Angeles, CA 90025

OVERHEAD GROUNDPLAN	
Project Manager Christina Vacciano	Project ID The Freud Playhouse
Drawn By EFM	Scale 1/4" = 10'
Reviewed By Libby Zomiska & Colin Corralle	Sheet No. 1
Date 1/20/2026	of 9



INSTRUMENT LIST		
Symbol	Description	Count
	Ayrton Saddle Profile @630 W	4
	GLP Impression S500 @750 W	4
	GLP Impression X5 @710 W	8
	Chauvet Rogue R1 Wash @161 W	4
	Altman Spectra Cyc @100w	13
	ETC Source 4 19deg @575 W	15
	ETC Source 4 26deg @575 W	60
	ETC Source 4 36deg @575 W	44
	ETC Source 4 36deg 750 W @750 W	13
	ETC Source 4 50deg 750 W @750 W	13
	ETC Source 4 70deg 750 W @750 W	2
	Altman PAR 64 WFL @1 W	2
	Selecon Compact 6 Fresnel @0.75 W	12
	ETC Source 4 Fresnel @750 W	16
	Light Instr USITT PAR MR-16 Birdie-WFL @65 W	12
	Light Instr USITT 10BP @1000 W	13
	Nestled Iris 2 Vert Top	15
	Light Instr ADJ Pinpoint 38 @30 W	16
	Altman RAO 4 Circ 6ft @12 W	4
	Robert Juliat Topaze 1119 @1200 W	2
	USITT Practical Symbol @0 W	10
ACCESSORY LIST		
Symbol	Description	Count
	6.25in Top Hat	38
SFX LIST		
Symbol	Description	Count
	Look Solutions Unique 2.1 @1500 W	1
Typical Notation		
	Unit Number	
	Change	
General Notes		
1) MEASUREMENTS MADE FROM CENTER OF PIPE UNLESS OTHERWISE NOTED		
2) ALL UNITS ARE TO HAVE APPROPRIATE FOCUS SLACK AND APPROPRIATE SAFETY HARDWARE		
3) PLEASE HAVE SPARE R119 & R132 AVAILABLE AT FOCUS		
4) ALL SIDE-ARMED OVERHEAD UNITS HUNG 1-00" FROM SIDEARM CLAMP		
5) ALL FROST SHOULD BE PLACED ON THE SIDE CLOSEST TO LENS OF FIXTURE		
THIS DRAWING REPRESENTS DESIGN INTENT, VISUAL CONCEPTS, AND CONSTRUCTION SUGGESTIONS ONLY. IT DOES NOT REPLACE THE KNOWLEDGE AND ADVICE OF A LICENSED STRUCTURAL ENGINEER.		
THE DESIGNER IS UNQUALIFIED TO DETERMINE STRUCTURAL APPROPRIATENESS OF THIS DESIGN AND WILL NOT ASSUME RESPONSIBILITY FOR IMPROPER ENGINEERING, IMPLEMENTATION, OR HANDLING OF THE ELEMENTS OF THIS DESIGN.		
THE IMPLEMENTATION OF THIS DESIGN MUST COMPLY WITH THE MOST STRINGENT APPLICABLE FEDERAL AND LOCAL SAFETY AND FIRE CODES.		
Directed By: Danielle Kay Lighting Design By: Em Moore +1 (415) 450 5198		
<b>EMMA: NO ONE BUT HERSELF</b> Revision No. 1 January 19th 2026 405 Hilgard Ave, Los Angeles, CA 90025		
ELECTRICS GROUNDPLAN		
Project Manager: Christina Vacciano	Project ID: The Freud Playhouse	
Drawn By: EFM	Scale: 1/2" = 10'	
Checked By: Libby Zamiska & Colin Corralle	Sheet No.: 2	
Date: 1/20/2026		
WAX File Name: EPMX_FINAL_HENLEY.BPT		

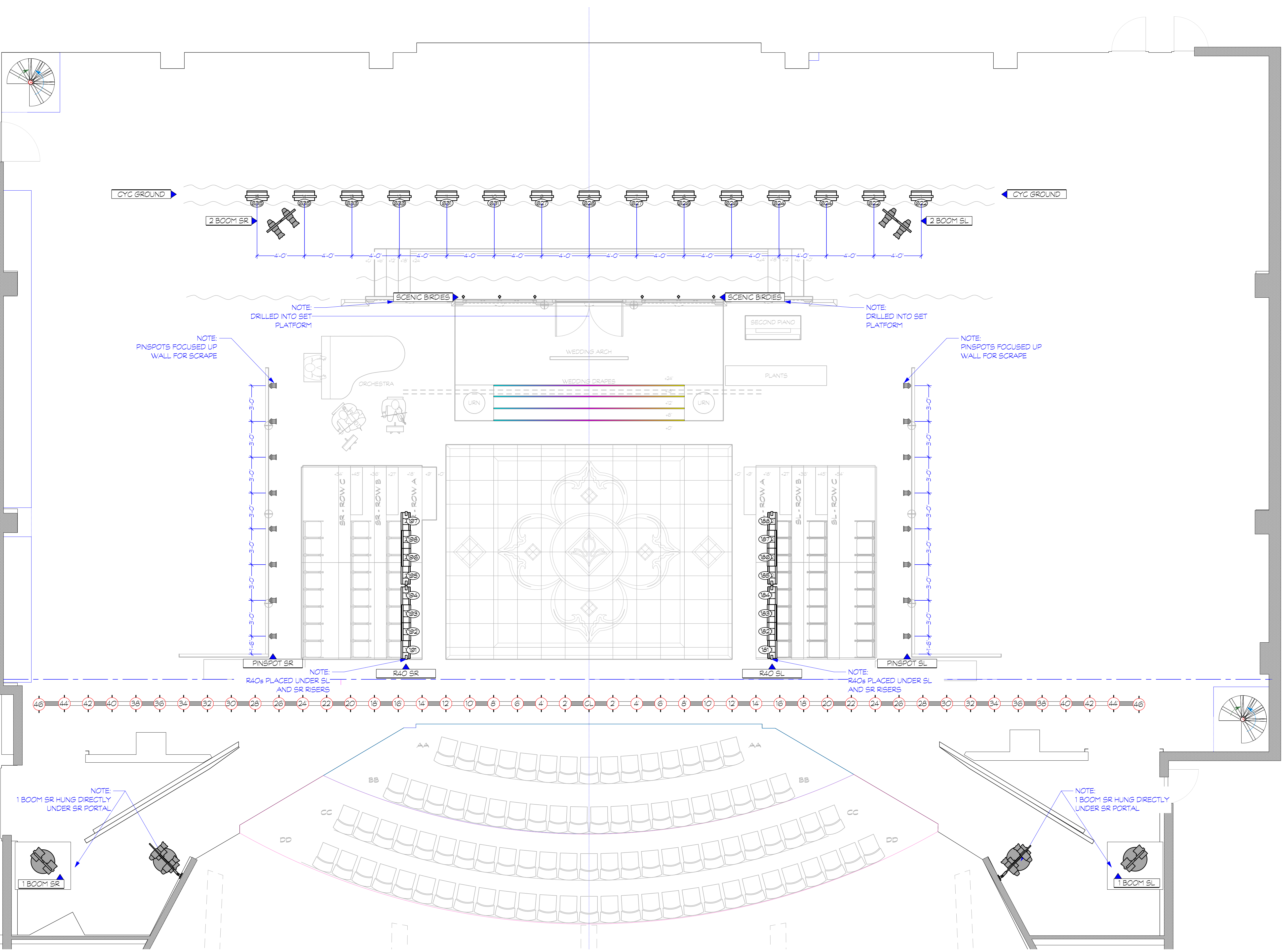
1 ELECTRICS GROUNDPLAN  
Scale: 1/2" = 10'



INSTRUMENT LIST		
Symbol	Description	Count
	Ayrton Stradale Profile @630 W	4
	GLP Impression S500 @750 W	4
	GLP Impression X5 @710 W	8
	Chauvet Rogue R1 Wash @161 W	4
	Altman Spectra Cyc @100w	13
	ETC Source 4 19deg @575 W	15
	ETC Source 4 26deg @575 W	60
	ETC Source 4 36deg @575 W	44
	ETC Source 4 36deg 750 W @750 W	13
	ETC Source 4 50deg 750 W @750 W	13
	ETC Source 4 70deg 750 W @750 W	2
	Altman PAR 64 WFL @1 W	2
	Selecon Compact 6' Fresnel @0.75 W	12
	ETC Source 4 Fresnel @750 W	16
	Light Instr USITT PAR MR-16 @65 W	12
	Light Instr USITT 10BP @1000 W	13
	Nestled Iris 2 Vert Top @30 W	15
	Light Instr ADJ Pinspot 38 @30 W	16
	Altman RAO 4 Circ 6ft @12 W	4
	Robert Juliat Topaze 1119 @1200 W	2
	USITT Practical Symbol @0 W	10
ACCESSORY LIST		
Symbol	Description	Count
	6.25in Top Hat	38
SFX LIST		
Symbol	Description	Count
	Look Solutions Unique 2.1 @1500 W	1
Typical Notation		
	Unit Number	
	Chang	
General Notes		
1) MEASUREMENTS MADE FROM CENTER OF PIPE UNLESS OTHERWISE NOTED		
2) ALL UNITS ARE TO HAVE APPROPRIATE FOCUS SLACK AND APPROPRIATE SAFETY HARDWARE		
4) PLEASE HAVE SPARE R119 & R132 AVAILABLE AT FOCUS		
5) ALL SIDE-ARMED OVERHEAD UNITS HUNG 1'-00" FROM SIDEARM CLAMP		
6) ALL FROST SHOULD BE PLACED ON THE SIDE CLOSEST TO LENS OF FIXTURE		
THIS DRAWING REPRESENTS DESIGN INTENT, VISUAL CONCEPTS, AND CONSTRUCTION SUGGESTIONS ONLY. IT DOES NOT REPLACE THE KNOWLEDGE AND ADVICE OF A LICENSED STRUCTURAL ENGINEER.		
THE DESIGNER IS UNQUALIFIED TO DETERMINE STRUCTURAL APPROPRIATENESS OF THIS DESIGN AND WILL NOT ASSUME RESPONSIBILITY FOR IMPROPER ENGINEERING, IMPLEMENTATION, OR HANDLING OF THE ELEMENTS OF THIS DESIGN.		
THE IMPLEMENTATION OF THIS DESIGN MUST COMPLY WITH THE MOST STRINGENT APPLICABLE FEDERAL AND LOCAL SAFETY AND FIRE CODES.		
Directed By: Danielle Kay Lighting Design By: Em Moore +1 (415) 450 5198		
<b>EMMA: NO ONE BUT HERSELF</b> Revision No. 1 January 19th 2026 405 Hilgard Ave, Los Angeles, CA 90025		
FOH GROUNDPLAN		
Project Manager Christina Vacciano	Project ID The Freud Playhouse	
Drawn By EFM	Scale 1/2" = 10'	
Reviewed By Libby Zamiska & Colin Corralle	Sheet No. 3	
Date 1/20/2026		
VAN File Name EMMA_FINAL_HENLEY.ETX		

1 FOH GROUNDPLAN  
Scale: 1/2" = 1'-0"

30'-01"	Cyc Bounce	34
23'-00"	9th Electric	33
30'-01"	Cyc	32
41'-05"		31
40'-05"		30
23'-00"	8th Electric	29
30'-01"	Border	28
30'-01"	Legs	27
25'-10"	7th Electric	26
25'-10"	6th Electric	25
25'-10"	Archway	24
00'-00"		23
00'-00"		22
00'-00"	Wedding Drapes	21
00'-00"		20
25'-10"	5th Electric	19
00'-00"		18
00'-00"		17
00'-00"		16
00'-00"		15
25'-10"	4th Electric	14
25'-10"	3rd Electric	13
00'-00"		12
00'-00"		11
25'-10"	Chandelier	10
25'-10"	2nd Electric	9
00'-00"		8
00'-00"		7
00'-00"		6
25'-10"	1st Electric	5
00'-00"		4
00'-00"		3
00'-00"		2
3'-04"	Main Drope	1
0'-00"	US Elevator Edge	0



Symbol	Description	Count
[Symbol]	Ayrton Straddle Profile @630 W	4
[Symbol]	GLP Impression S500 @750 W	4
[Symbol]	GLP Impression X5 @710 W	8
[Symbol]	Chauvet Rogue R1 Wash @161 W	4
[Symbol]	Aitman Spectra Cyc @100w	13
[Symbol]	ETC Source 4 19deg @575 W	15
[Symbol]	ETC Source 4 26deg @575 W	60
[Symbol]	ETC Source 4 36deg @575 W	44
[Symbol]	ETC Source 4 36deg 750 W @750 W	13
[Symbol]	ETC Source 4 50deg 750 W @750 W	13
[Symbol]	ETC Source 4 70deg 750 W @750 W	2
[Symbol]	Aitman PAR 64 WFL @1 W	2
[Symbol]	Selecon Compact 6' Fresnel @0.75 W	12
[Symbol]	ETC Source 4 Fresnel @750 W	16
[Symbol]	Light Instr USITT PAR MR-16 Birdie-WFL @65 W	12
[Symbol]	Light Instr USITT 108P @1000 W	13
[Symbol]	zNestd Iris 2 Vert Top @30 W	15
[Symbol]	Light Instr ADJ Pinstop 38 @30 W	16
[Symbol]	Aitman R40 4 Circ 6ft @12 W	4
[Symbol]	Robert Juliat Topaze 1119 @1200 W	2
[Symbol]	USITT Practical Symbol @0 W	10

**ACCESSORY LIST**

Symbol	Description	Count
[Symbol]	6.25in Top Hat	38

**SFX LIST**

[Symbol]	Look Solutions Unique 2.1 @1500 W	1
----------	-----------------------------------	---

**Typical Notation**

Unit Number

Channel

- General Notes**
- 1) MEASUREMENTS MADE FROM CENTER OF PIPE UNLESS OTHERWISE NOTED
  - 2) ALL UNITS ARE TO HAVE APPROPRIATE FOCUS SLACK AND APPROPRIATE SAFETY HARDWARE
  - 3) PLEASE HAVE SPARE R19 & R32 AVAILABLE AT FOCUS
  - 4) ALL SIDE-ARMED OVERHEAD UNITS HUNG 1'-00" FROM SIDEARM CLAMP
  - 5) ALL FROST SHOULD BE PLACED ON THE SIDE CLOSEST TO ENDS OF FIXTURE

THIS DRAWING REPRESENTS DESIGN INTENT, VISUAL CONCEPTS, AND CONSTRUCTION SUGGESTIONS ONLY. IT DOES NOT REPLACE THE KNOWLEDGE AND ADVICE OF A LICENSED STRUCTURAL ENGINEER.

THE DESIGNER IS UNQUALIFIED TO DETERMINE STRUCTURAL APPROPRIATENESS OF THIS DESIGN AND WILL NOT ASSUME RESPONSIBILITY FOR IMPROPER ENGINEERING, IMPLEMENTATION, OR HANDLING OF THE ELEMENTS OF THIS DESIGN.

THE IMPLEMENTATION OF THIS DESIGN MUST COMPLY WITH THE MOST STRINGENT APPLICABLE FEDERAL AND LOCAL SAFETY AND FIRE CODES.

Directed By: Danielle Kay  
 Lighting Design By: Em Moore  
 +1 (415) 450 5198

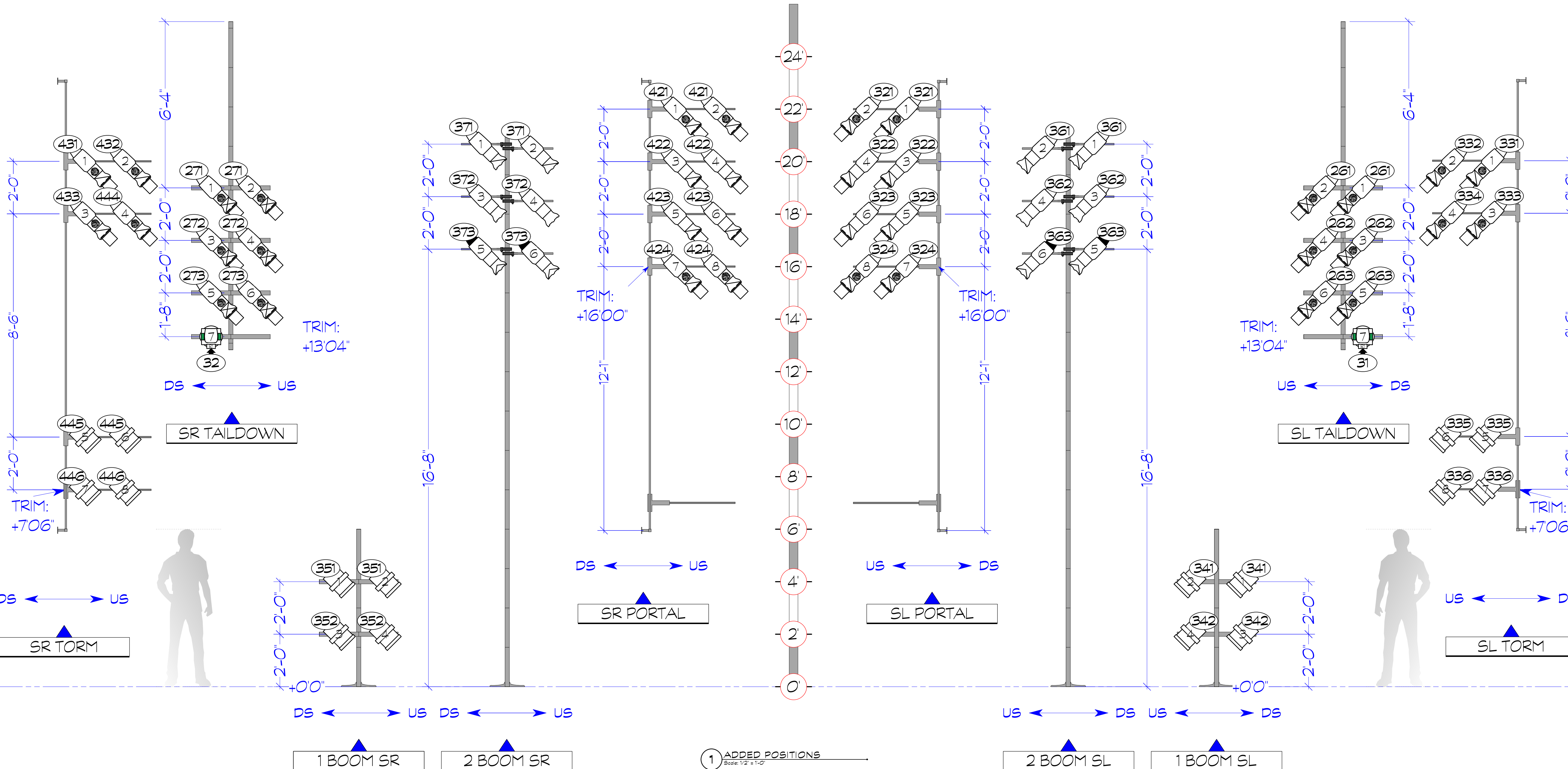
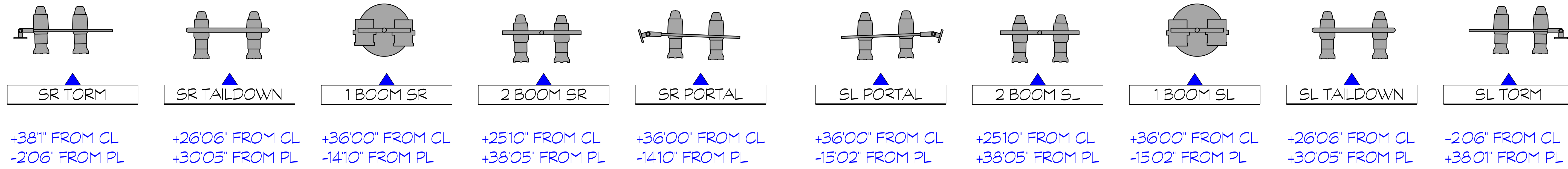
**EMMA: NO ONE BUT HERSELF**  
 Revision No. 1 January 19th 2026  
 405 Hilgard Ave,  
 Los Angeles, CA 90025

**DECK GROUNDPLAN**

Project Manager Christina Vacciano	Project ID The Freud Playhouse
Drawn By EFM	Scale 1/4" = 10'
Reviewed By Libby Zamiska & Colin Corralle	Sheet No. 4
Date 1/20/2026	
VAN File Name EMMA_FINAL_HENLEY.ETW	9

1 DECK GROUNDPLAN  
 Scale: 1/4" = 1'-0"

# Vectorworks Educational Version



① ADDED POSITIONS  
Scale: 1/2" = 1'-0"

NOTE 2-FER CHANNELING PER POSITION

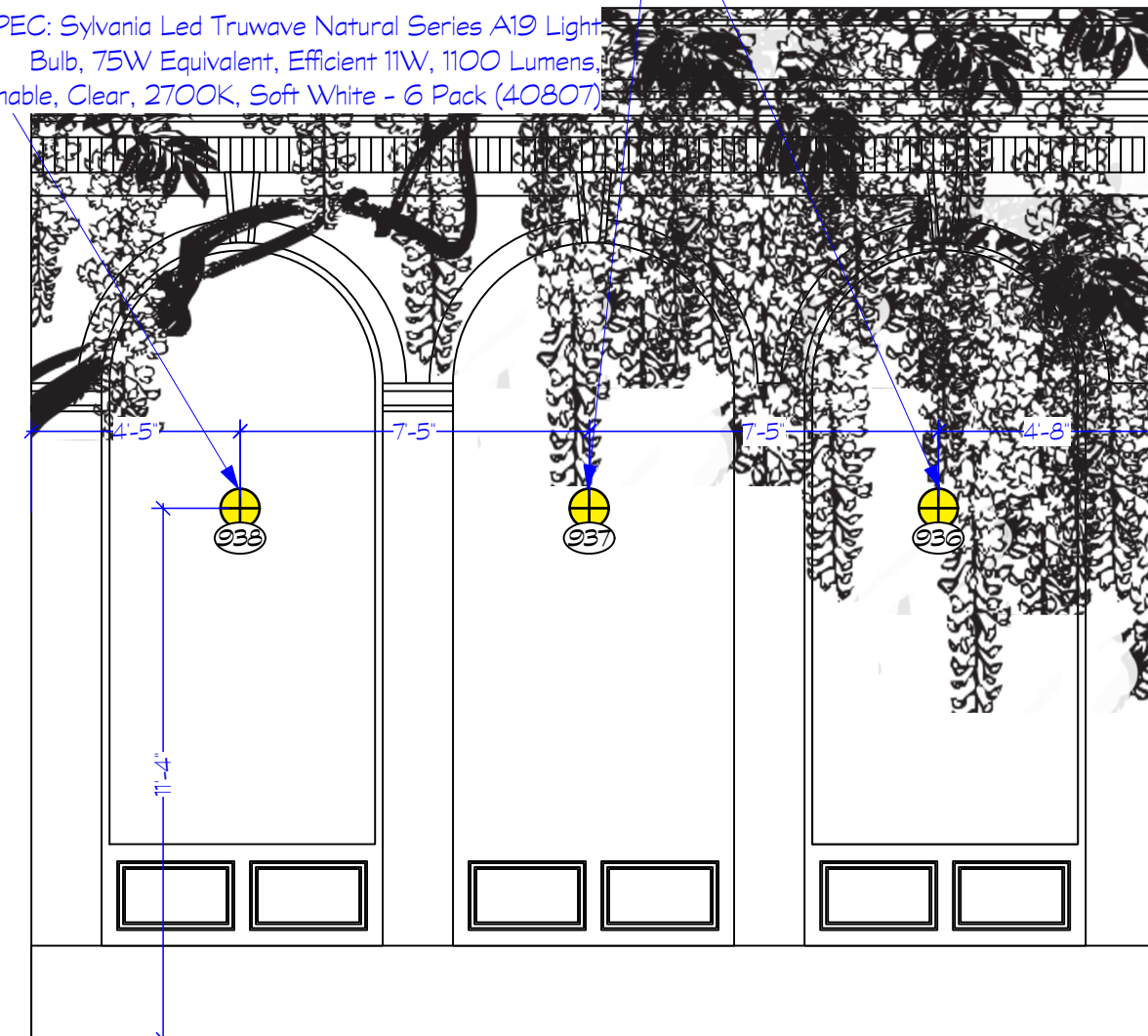
INSTRUMENT LIST		
Symbol	Description	Count
	Ayrton Straddle Profile @630 W	4
	GLP Impression S500 @750 W	4
	GLP Impression X5 @710 W	8
	Chauvet Rogue R1 Wash @161 W	4
	Altman Spectra Cyc @100w	13
	ETC Source 4 19deg @575 W	15
	ETC Source 4 26deg @575 W	60
	ETC Source 4 36deg @575 W	44
	ETC Source 4 36deg 750 W @750 W	13
	ETC Source 4 50deg 750 W @750 W	13
	ETC Source 4 70deg 750 W @750 W	2
	Altman PAR 64 WFL @1 W	2
	Selecon Compact 6' Fresnel @0.75 W	12
	ETC Source 4 Fresnel @750 W	16
	Light Instr USITT PAR MR-16 @65 W	12
	Light Instr USITT 108P @1000 W	13
	zNestled Iris 2 Vert Top @30 W	15
	Light Instr ADJ Pinspot 38 @30 W	16
	Altman 640 4 Circ 6ft @12 W	4
	Robert Juliat Topaze 1119 @1200 W	2
	USITT Practical Symbol @0 W	10
ACCESSORY LIST		
Symbol	Description	Count
	6.25in Top Hat	38
SFX LIST		
Symbol	Description	Count
	Lock Solutions Unique 2.1 @1500 W	1
Typical Notation		
	Unit Number	
	Channel	
General Notes		
1) MEASUREMENTS MADE FROM CENTER OF PIPE UNLESS OTHERWISE NOTED		
2) ALL UNITS ARE TO HAVE APPROPRIATE FOCUS SLACK AND APPROPRIATE SAFETY HARDWARE		
4) PLEASE HAVE SPARE R119 & R132 AVAILABLE AT FOCUS		
5) ALL SIDE-ARMED OVERHEAD UNITS HUNG 1'-00" FROM SIDEARM CLAMP		
6) ALL FROST SHOULD BE PLACED ON THE SIDE CLOSEST TO LENS OF FIXTURE		
THIS DRAWING REPRESENTS DESIGN INTENT, VISUAL CONCEPTS, AND CONSTRUCTION SUGGESTIONS ONLY. IT DOES NOT REPLACE THE KNOWLEDGE AND ADVICE OF A LICENSED STRUCTURAL ENGINEER.		
THE DESIGNER IS UNQUALIFIED TO DETERMINE STRUCTURAL APPROPRIATENESS OF THIS DESIGN AND WILL NOT ASSUME RESPONSIBILITY FOR IMPROPER ENGINEERING, IMPLEMENTATION, OR HANDLING OF THE ELEMENTS OF THIS DESIGN.		
THE IMPLEMENTATION OF THIS DESIGN MUST COMPLY WITH THE MOST STRINGENT APPLICABLE FEDERAL AND LOCAL SAFETY AND FIRE CODES.		
Directed By: Danielle Kay Lighting Design By: Em Moore +1 (415) 450 5198		
EMMA: NO ONE BUT HERSELF		
Revision No. 1 January 19th 2026 405 Hilgard Ave, Los Angeles, CA 90025		
ADDED POSITIONS		
Project Manager: Christina Vacciano	Project ID: The Freud Playhouse	
Drawn By: EFM	Scale: 1/2" = 1'0"	
Reviewed By: Libby Zamiska & Colin Corralle	Sheet No.:	5
Date: 1/20/2026		
WAX File Name: EMMA_FINAL_HEMLEY.EPR		9

REFERENCE IMAGE



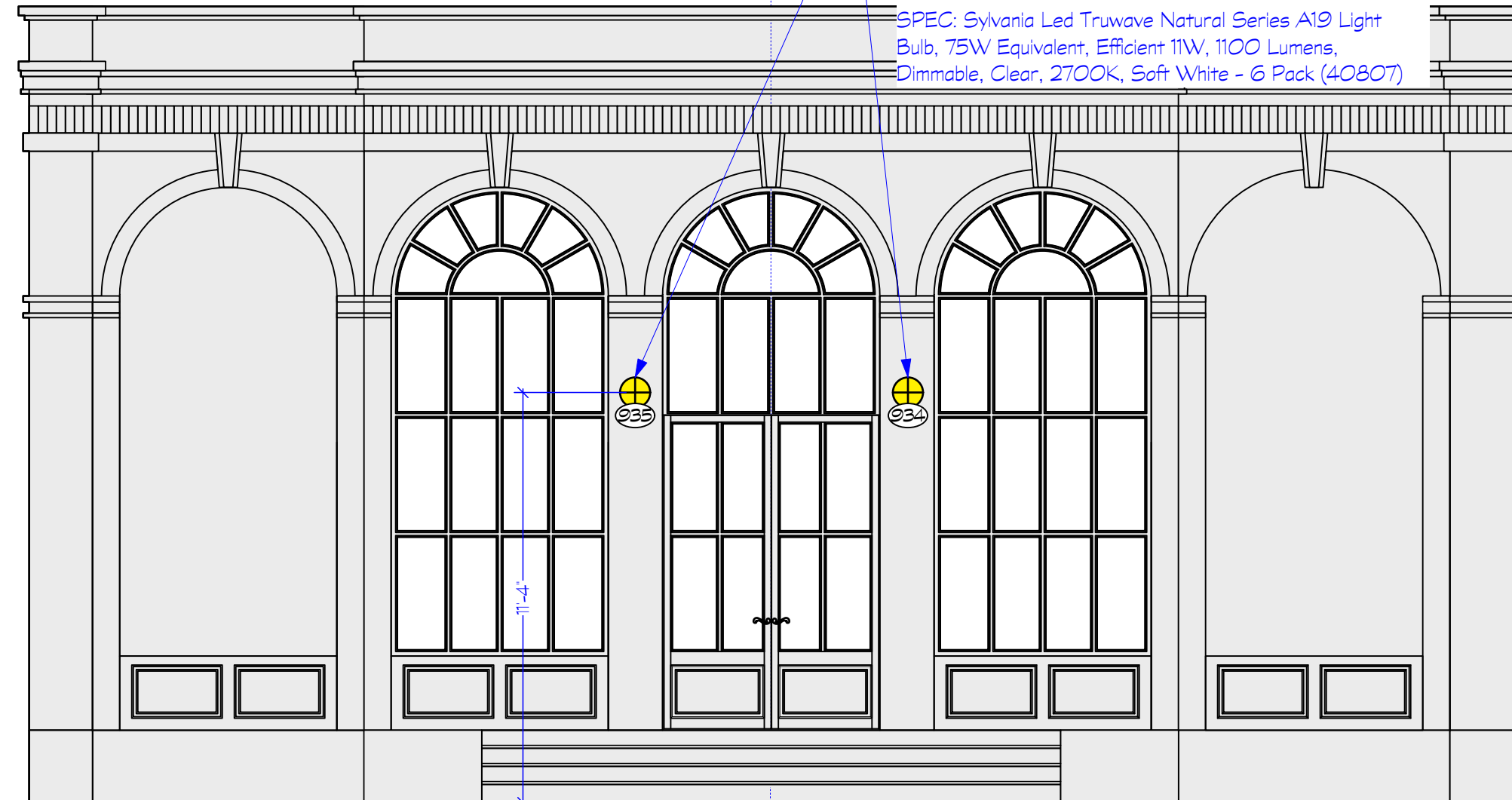
NOTE:  
PLACED IN CENTER OF COLUMN  
2 BULBS PER FIXTURES A19 BULB

SPEC: Sylvania Led Truwave Natural Series A19 Light Bulb, 75W Equivalent, Efficient 11W, 1100 Lumens, Dimmable, Clear, 2700K, Soft White - 6 Pack (40807)



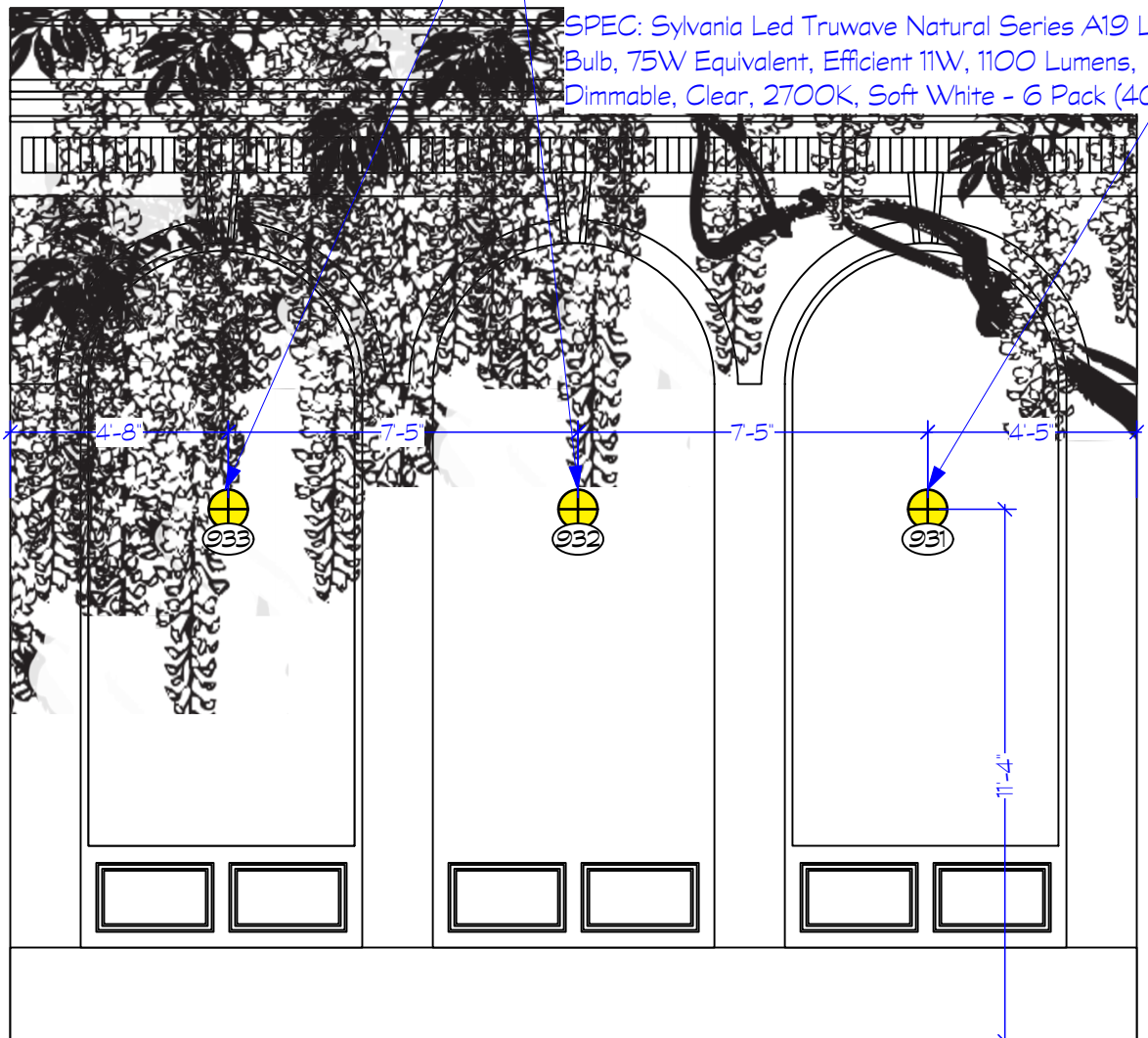
NOTE:  
PLACED IN CENTER OF COLUMN  
2 BULBS PER FIXTURES A19 BULB

SPEC: Sylvania Led Truwave Natural Series A19 Light Bulb, 75W Equivalent, Efficient 11W, 1100 Lumens, Dimmable, Clear, 2700K, Soft White - 6 Pack (40807)



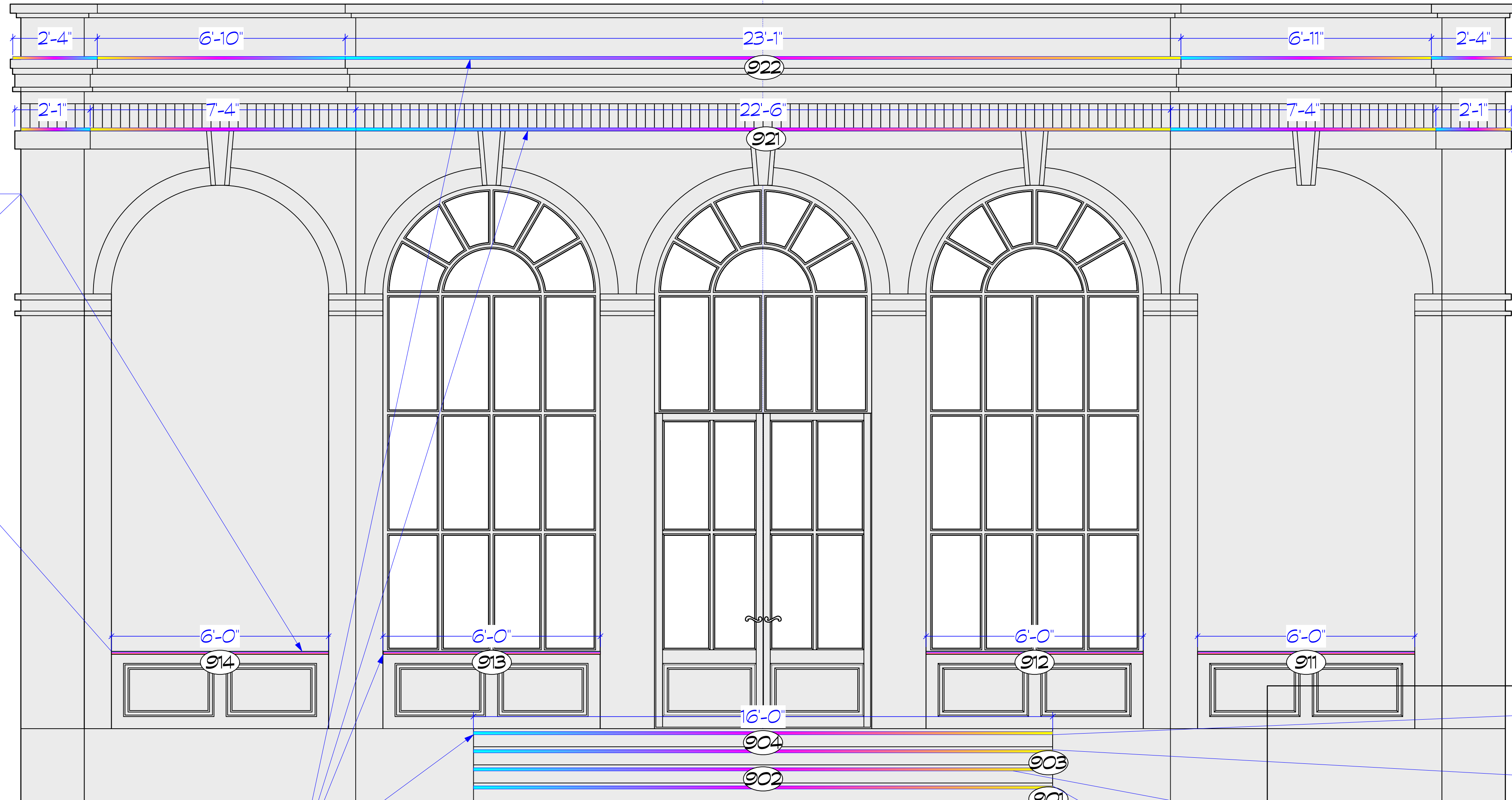
NOTE:  
PLACED IN CENTER OF COLUMN  
2 BULBS PER FIXTURES A19 BULB

SPEC: Sylvania Led Truwave Natural Series A19 Light Bulb, 75W Equivalent, Efficient 11W, 1100 Lumens, Dimmable, Clear, 2700K, Soft White - 6 Pack (40807)

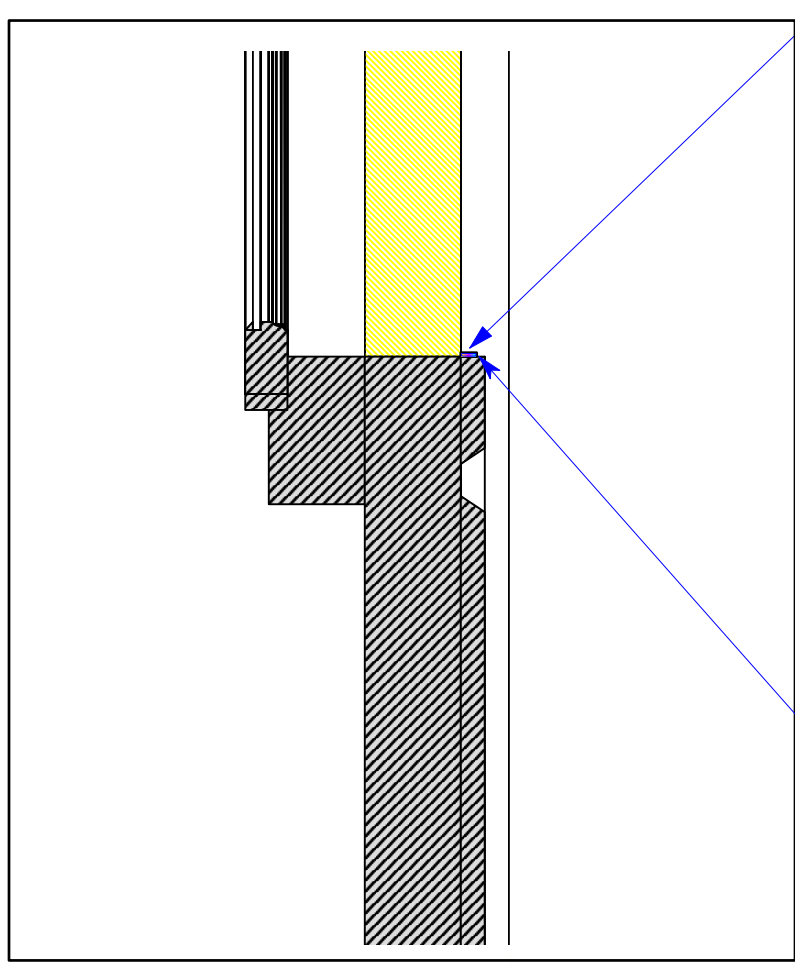


## 1 SCENIC SCANCES

Scale: 1/4" = 1'-0"



NOTE:  
6 SEGMENTS OF CHANNELING NEEDED TO CONCEAL DIODES



NOTE:  
LED TAPE ELLXTRA 5-IN-1 LED STRIP LIGHT, 24V, INDOOR

10 CHANNELS NEEDED, ColorFLEX 24x3A Dimmer  
SPEC: RGB2465K-5050-60-24V-5m WHITE FINISH

## 2 LED TAPE

Scale: 1/2" = 1'-0"

**NOTE SCALE CHANGE**

Symbol	Description	Count
	Ayrton Straddle Profile @630 W	4
	GLP Impression S500 @750 W	4
	GLP Impression X5 @710 W	8
	Chauvet Rogue R1 Wash @61 W	4
	Altman Spectra Cyc @100w	13
	ETC Source 4 19deg @575 W	15
	ETC Source 4 26deg @575 W	60
	ETC Source 4 36deg @575 W	44
	ETC Source 4 36deg 750 W @750 W	13
	ETC Source 4 50deg 750 W @750 W	13
	ETC Source 4 70deg 750 W @750 W	2
	Altman PAR 64 WFL @1 W	2
	Selecon Compact 6' Fresnel @0.75 W	12
	ETC Source 4 Fresnel @750 W	16
	Light Instr USITT PAR MR-16 Birdie-WFL @65 W	12
	Light Instr USITT 10BP @1000 W	13
	zNestd Iris 2 Vert Top @30 W	15
	Light Instr ADJ Pinpoint 38 @30 W	16
	Altman RAG 4 Circ 6ft @12 W	4
	Robert Juliat Topaze 1119 @1200 W	2
	USITT Practical Symbol @0 W	10

ACCESSORY LIST		
Symbol	Description	Count
	6.25in Top Hat	38

SFX LIST		
Symbol	Description	Count
	Lock Solutions Unique 2.1 @1500 W	1

Typical Notation	
	Unit Number
	Channel

- General Notes**
- MEASUREMENTS MADE FROM CENTER OF PIPE UNLESS OTHERWISE NOTED
  - ALL UNITS ARE TO HAVE APPROPRIATE FOCUS SLACK AND APPROPRIATE SAFETY HARDWARE
  - PLEASE HAVE SPARE R119 & R132 AVAILABLE AT FOCUS
  - ALL SIDE-ARMED OVERHEAD UNITS HUNG 1'-0" FROM SIDEARM CLAMP
  - ALL FROST SHOULD BE PLACED ON THE SIDE CLOSEST TO LENS OF FIXTURE

THIS DRAWING REPRESENTS DESIGN INTENT, VISUAL CONCEPTS, AND CONSTRUCTION SUGGESTIONS ONLY. IT DOES NOT REPLACE THE KNOWLEDGE AND ADVICE OF A LICENSED STRUCTURAL ENGINEER.

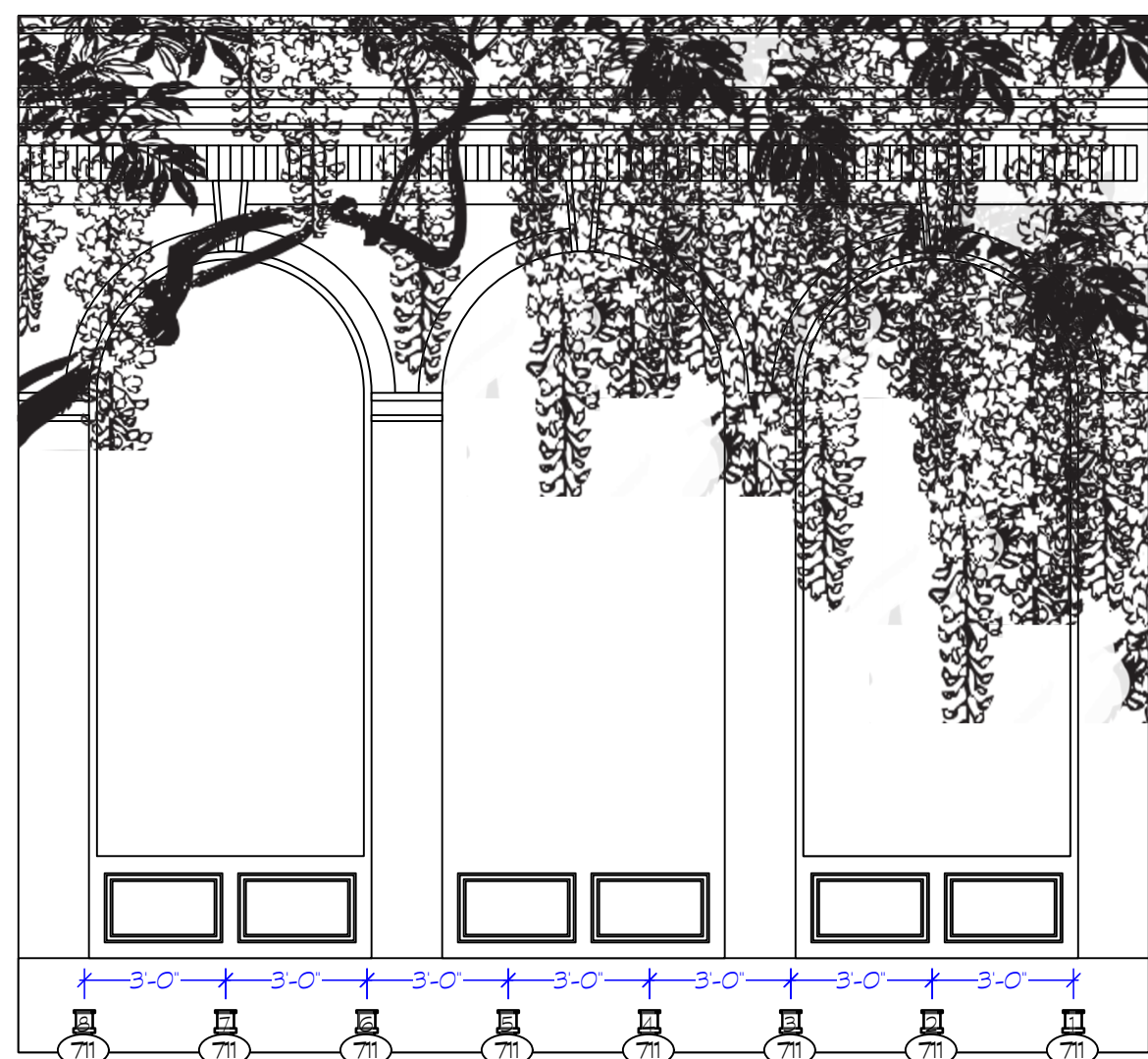
THE DESIGNER IS UNQUALIFIED TO DETERMINE STRUCTURAL APPROPRIATENESS OF THIS DESIGN AND WILL NOT ASSUME RESPONSIBILITY FOR IMPROPER ENGINEERING, IMPLEMENTATION, OR HANDLING OF THE ELEMENTS OF THIS DESIGN.

THE IMPLEMENTATION OF THIS DESIGN MUST COMPLY WITH THE MOST STRINGENT APPLICABLE FEDERAL AND LOCAL SAFETY AND FIRE CODES.

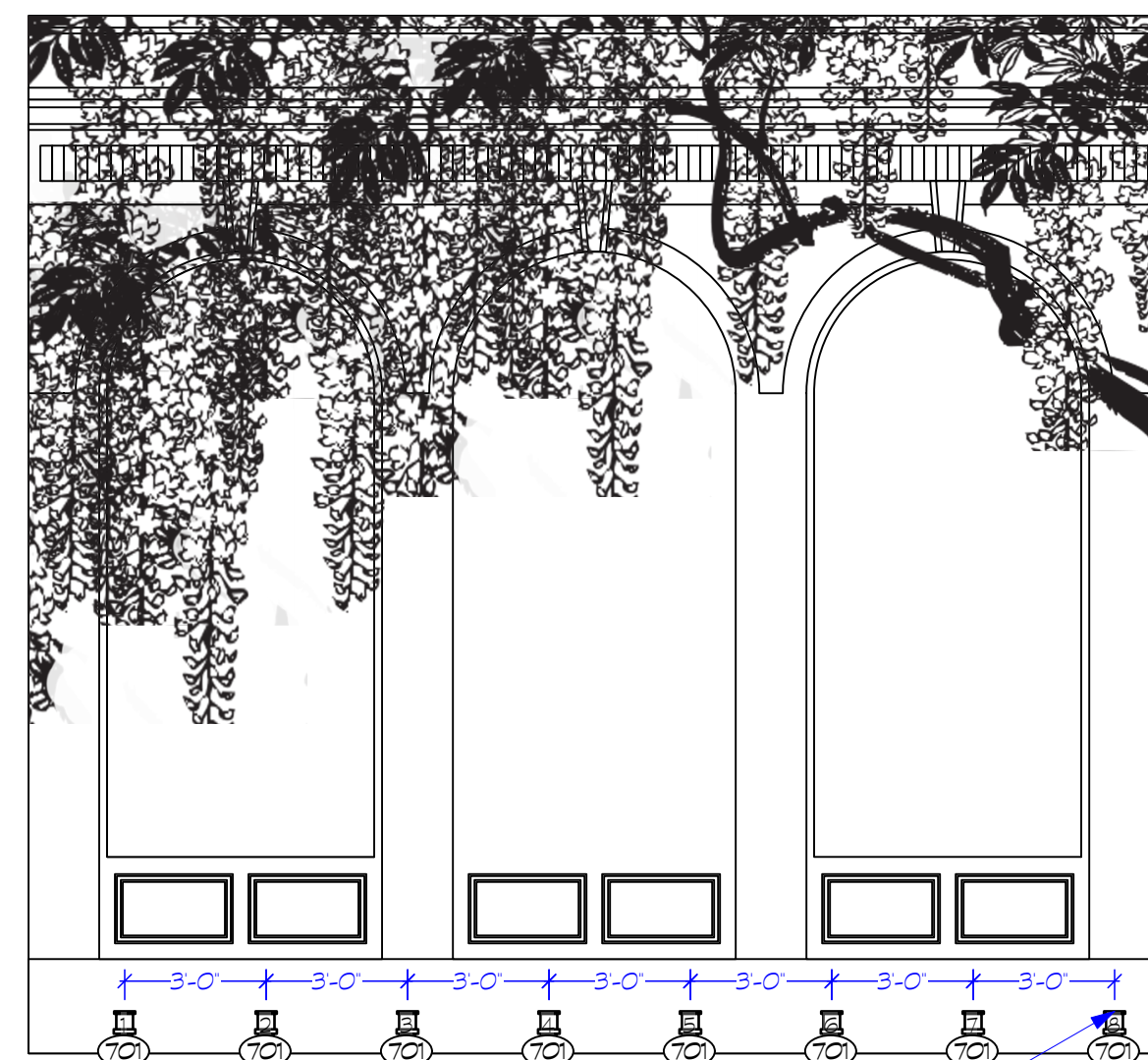
Directed By: Danielle Kay  
Lighting Design By: Em Moore  
+1 (415) 450 5198

**EMMA: NO ONE BUT HERSELF**  
Revision No. 1, January 19th 2026  
405 Hilgard Ave,  
Los Angeles, CA 90025

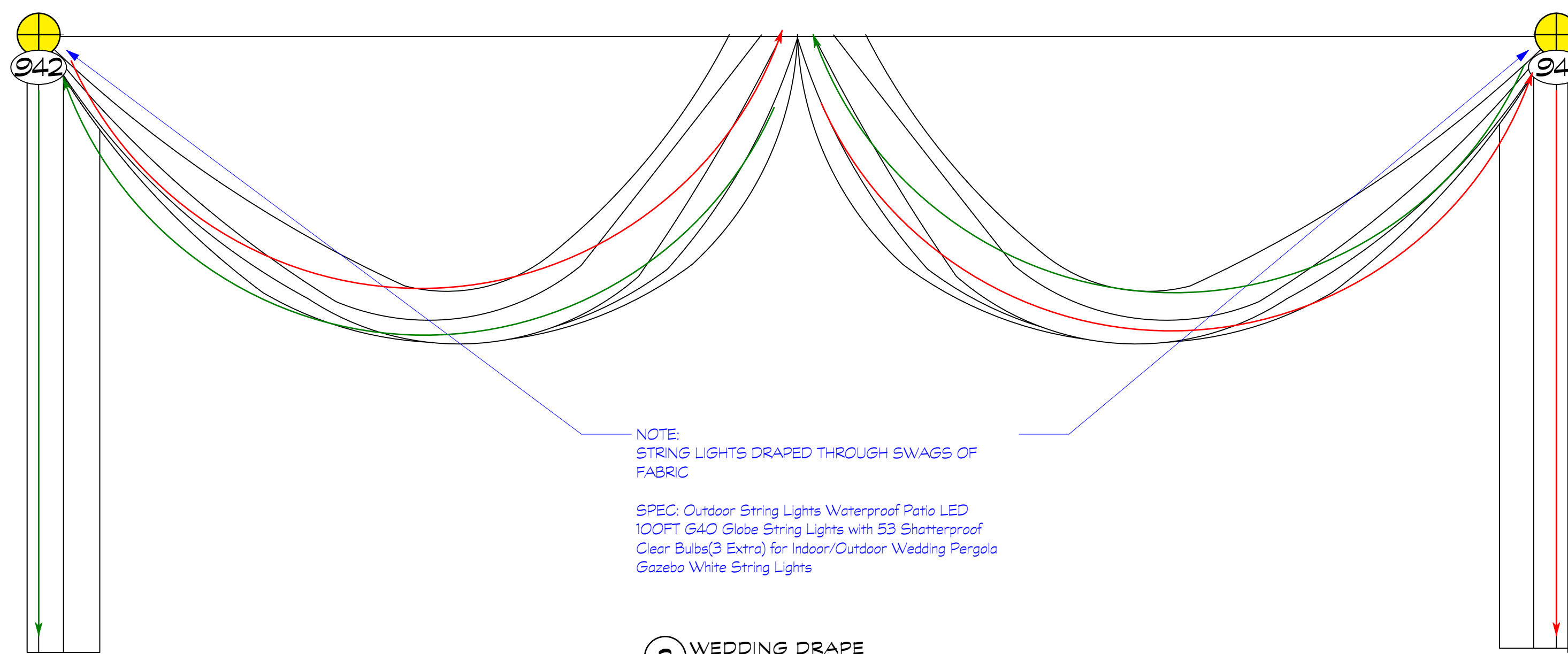
SET ELECTRICS	
Project Manager: Christina Vacciano	Project ID: The Freud Playhouse
Drawn By: EFM	Scale: AS NOTED
Reviewed By: Libby Zamiska & Colin Corralle	Sheet No.: 6
Date: 1/20/2026	of 9



**1 PINSPOTELEVATION**  
Scale: 1/4" = 1'-0"



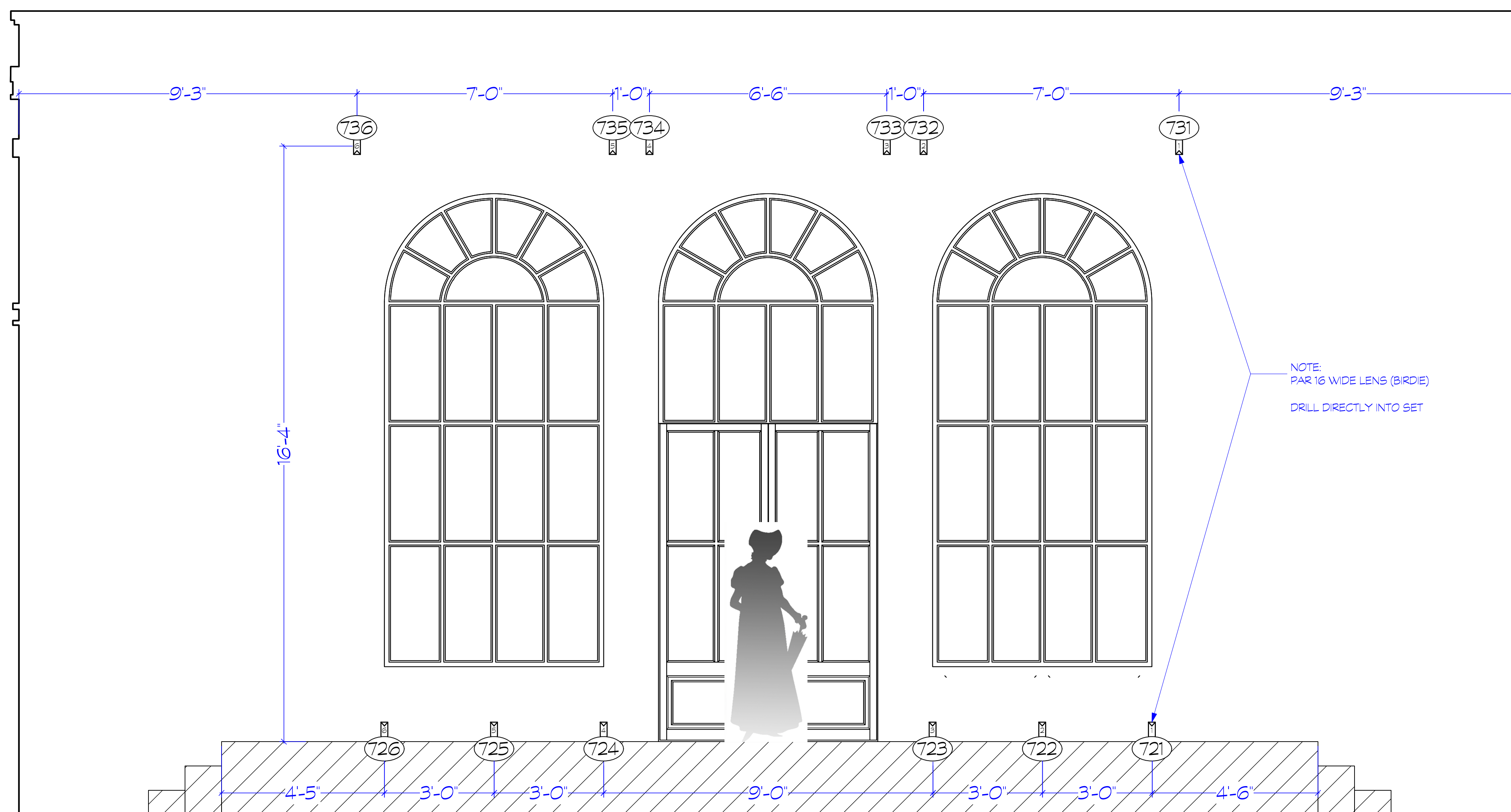
NOTE:  
PINSPOTS DRILLED DIRECTLY INTO DECK  
FOCUS UPWARD TO SCRAPE SCENIC WALL



**2 WEDDING DRAPE**  
Scale: 1/2" = 1'-0"

NOTE:  
STRING LIGHTS DRAPED THROUGH SWAGS OF FABRIC

SPEC: Outdoor String Lights Waterproof Patio LED 100FT G40 Globe String Lights with 53 Shatterproof Clear Bulbs(3 Extra) for Indoor/Outdoor Wedding Pergola Gazebo White String Lights



**3 BIRDIE ELEVATION**  
Scale: 1/2" = 1'-0"

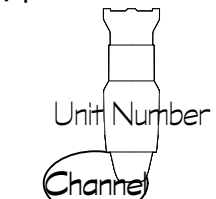
NOTE:  
PAR 16 WIDE LENS (BIRDIE)  
DRILL DIRECTLY INTO SET

Symbol	Description	Count
	Ayrton Stradale Profile @630 W	4
	GLP Impression S500 @750 W	4
	GLP Impression X5 @710 W	8
	Chauvet Rogue R1 Wash @161 W	4
	Altman Spectra Cyc @100w	13
	ETC Source 4 19deg @575 W	15
	ETC Source 4 26deg @575 W	60
	ETC Source 4 36deg @575 W	44
	ETC Source 4 36deg 750 W @750 W	13
	ETC Source 4 50deg 750 W @750 W	13
	ETC Source 4 70deg 750 W @750 W	2
	Altman PAR 64 WFL @1 W	2
	Selecon Compact 6' Fresnel @0.75 W	12
	ETC Source 4 Fresnel @750 W	16
	Light Instr USITT PAR MR-16 Birdie-WFL @65 W	12
	Light Instr USITT 10BP @1000 W	13
	zNestled Iris 2 Vert Top @30 W	15
	Light Instr ADJ Pinpoint 38 @30 W	16
	Altman R40 4 Circ 6ft @12 W	4
	Robert Juliat Topaze 1119 @1200 W	2
	USITT Practical Symbol @0 W	10

### ACCESSORY LIST

Symbol	Description	Count
	6.25in Top Hat	38
	Lock Solutions Unique 2.1 @1500 W	1

### Typical Notation



### General Notes

- 1) MEASUREMENTS MADE FROM CENTER OF PIPE UNLESS OTHERWISE NOTED
  - 2) ALL UNITS ARE TO HAVE APPROPRIATE FOCUS SLACK AND APPROPRIATE SAFETY HARDWARE
  - 3) PLEASE HAVE SPARE R119 & R132 AVAILABLE AT FOCUS
  - 4) ALL SIDE-ARMED OVERHEAD UNITS HUNG 1'-0" FROM SIDEARM CLAMP
  - 5) ALL FROST SHOULD BE PLACED ON THE SIDE CLOSEST TO LENS OF FIXTURE
- THIS DRAWING REPRESENTS DESIGN INTENT, VISUAL CONCEPTS, AND CONSTRUCTION SUGGESTIONS ONLY. IT DOES NOT REPLACE THE KNOWLEDGE AND ADVICE OF A LICENSED STRUCTURAL ENGINEER.
- THE DESIGNER IS UNQUALIFIED TO DETERMINE STRUCTURAL APPROPRIATENESS OF THIS DESIGN AND WILL NOT ASSUME RESPONSIBILITY FOR IMPROPER ENGINEERING, IMPLEMENTATION, OR HANDLING OF THE ELEMENTS OF THIS DESIGN.
- THE IMPLEMENTATION OF THIS DESIGN MUST COMPLY WITH THE MOST STRINGENT APPLICABLE FEDERAL AND LOCAL SAFETY AND FIRE CODES.

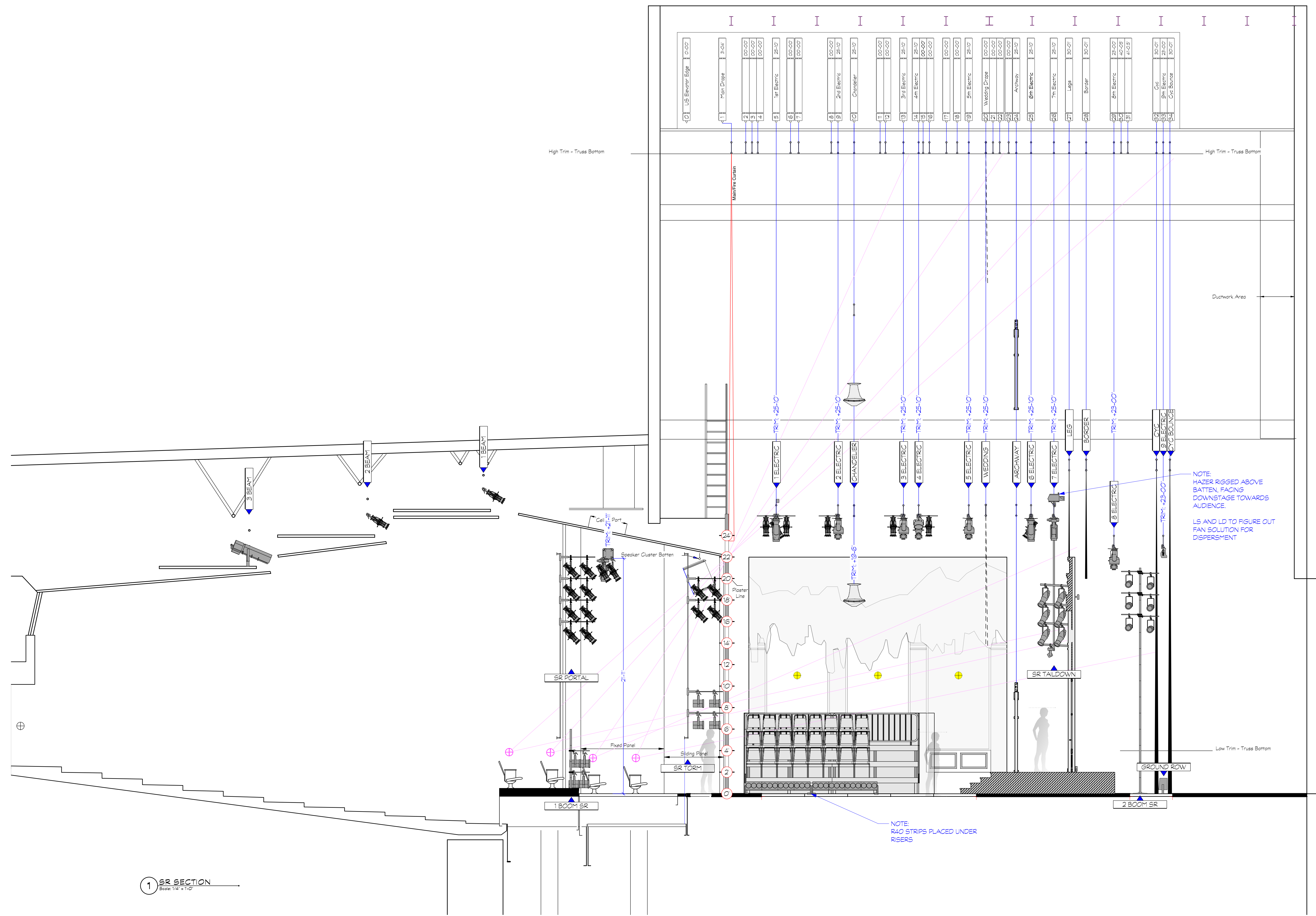
Directed By: Danielle Kay  
Lighting Design By: Em Moore  
+1 (415) 450 5198



**EMMA: NO ONE BUT HERSELF**  
Revision No. 1 January 19th 2026  
405 Hilgard Ave,  
Los Angeles, CA 90025

### SET ELECTRICS

Project Manager Christina Vacciano	Project ID The Freud Playhouse
Drawn By EFM	Scale AS NOTED
Reviewed By Libby Zamiska & Colin Corralle	Sheet No. 7
Date 1/20/2026	of 9



1 SR SECTION  
Scale: 1/4" = 1'-0"

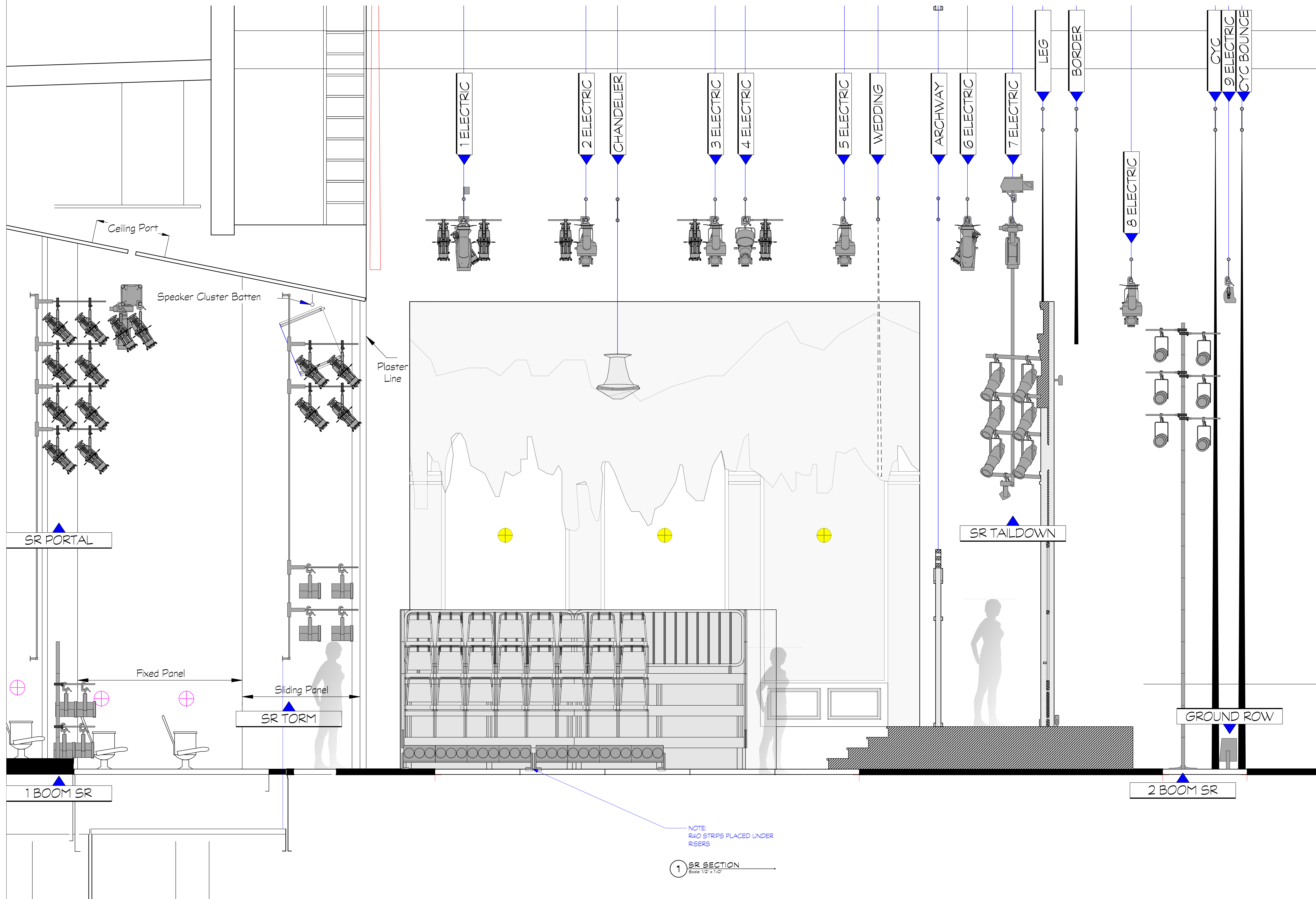
Symbol	Description	Count
	Ayrton Straddle Profile @630 W	4
	GLP Impression S500 @750 W	4
	GLP Impression X5 @710 W	8
	Chauvet Rogue R1 Wash @61 W	4
	Alyman Spectra Cyc @100w	13
	ETC Source 4 19deg @575 W	15
	ETC Source 4 26deg @575 W	60
	ETC Source 4 36deg @575 W	44
	ETC Source 4 36deg 750 W @750 W	13
	ETC Source 4 50deg 750 W @750 W	13
	ETC Source 4 70deg 750 W @750 W	2
	Alyman PAR 64 WFL @1 W	2
	Selecon Compact 6' Fresnel @0.75 W	12
	ETC Source 4 Fresnel @750 W	16
	Light Instr USITT PAR MR-16 @65 W	12
	Light Instr USITT 10BP @1000 W	13
	zNestd Iris 2 Vert Top @30 W	15
	Light Instr ADJ Pinspot 38 @30 W	16
	Alyman R40 4 Circ 6ft @12 W	4
	Robert Juliat Topaze 1119 @1200 W	2
	USITT Practical Symbol @0 W	10
<b>ACCESSORY LIST</b>		
Symbol	Description	Count
	6.25in Top Hat	38
<b>SFX LIST</b>		
	Look Solutions Unique 2.1 @1800 W	1
<b>Typical Notation</b>		
	Unit Number	
	Chaming	
<b>General Notes</b>		
1) MEASUREMENTS MADE FROM CENTER OF PIPE UNLESS OTHERWISE NOTED		
2) ALL UNITS ARE TO HAVE APPROPRIATE FOCUS SLACK AND APPROPRIATE SAFETY HARDWARE		
4) PLEASE HAVE SPARE R119 & R132 AVAILABLE AT FOCUS		
5) ALL SIDE-ARMED OVERHEAD UNITS HUNG 1'-0" FROM SIDEARM CLAMP		
6) ALL FROST SHOULD BE PLACED ON THE SIDE CLOSEST TO LENS OF FIXTURE		
THIS DRAWING REPRESENTS DESIGN INTENT, VISUAL CONCEPTS, AND CONSTRUCTION SUGGESTIONS ONLY. IT DOES NOT REPLACE THE KNOWLEDGE AND ADVICE OF A LICENSED STRUCTURAL ENGINEER.		
THE DESIGNER IS UNQUALIFIED TO DETERMINE STRUCTURAL APPROPRIATENESS OF THIS DESIGN AND WILL NOT ASSUME RESPONSIBILITY FOR PROPER ENGINEERING, IMPLEMENTATION, OR HANDLING OF THE ELEMENTS OF THIS DESIGN.		
THE IMPLEMENTATION OF THIS DESIGN MUST COMPLY WITH THE MOST STRINGENT APPLICABLE FEDERAL AND LOCAL SAFETY AND FIRE CODES.		
Directed By: Danielle Kay Lighting Design By: Em Moore +1 (415) 450 5198		
<b>EMMA: NO ONE BUT HERSELF</b> Revision No. 1 January 19th 2026 405 Hilgard Ave, Los Angeles, CA 90025		
<b>SR SECTION</b>		
Project Manager Christina Vacciano	Project ID The Freud Playhouse	
Drawn By EFM	Scale 1/4" = 10'	
Reviewed By Libby Zamiska & Colin Corralle	Sheet No. 8	
Date 1/20/2026		
VAN File Name EMMA_SR_SECTION_VACCANO		9

NOTE:  
HAZER RIGGED ABOVE  
BATTEN, FACING  
DOWNSTAGE TOWARDS  
AUDIENCE.

LS AND LD TO FIGURE OUT  
FAN SOLUTION FOR  
DISPERSMENT

NOTE:  
R40 STRIPS PLACED UNDER  
RISERS

# Vectorworks Educational Version



Symbol	Description	Count
	Ayrton Straddle Profile @630 W	4
	GLP Impression S500 @750 W	4
	GLP Impression X5 @710 W	8
	Chauvet Rogue R1 Wash @161 W	4
	Altman Spectra Cyc @100w	13
	ETC Source 4 19deg @575 W	15
	ETC Source 4 26deg @575 W	60
	ETC Source 4 36deg @575 W	44
	ETC Source 4 36deg 750 W @750 W	13
	ETC Source 4 50deg 750 W @750 W	13
	ETC Source 4 70deg 750 W @750 W	2
	Altman PAR 64 WFL @1 W	2
	Selecon Compact 6' Fresnel @0.75 W	12
	ETC Source 4 Fresnel @750 W	16
	Light Instr USITT PAR MR-16 @65 W	12
	Birdie-WFL @65 W	13
	Light Instr USITT 10BP @1000 W	13
	zNestd Iris 2 Vert Top @30 W	15
	Light Instr ADJ Pinspot 38 @30 W	16
	Altman R40 4 Circ 6ft @12 W	4
	Robert Juliat Topaze 1119 @1200 W	2
	USITT Practical Symbol @0 W	10

**ACCESSORY LIST**

Symbol	Description	Count
	6.25in Top Hat	38

**SFX LIST**

Symbol	Description	Count
	Look Solutions Unique 2.1 @1500 W	1

**Typical Notation**

	Unit Number
	Channeled

- General Notes**
- 1) MEASUREMENTS MADE FROM CENTER OF PIPE UNLESS OTHERWISE NOTED
  - 2) ALL UNITS ARE TO HAVE APPROPRIATE FOCUS SLACK AND APPROPRIATE SAFETY HARDWARE
  - 4) PLEASE HAVE SPARE R119 & R132 AVAILABLE AT FOCUS
  - 5) ALL SIDE-ARMED OVERHEAD UNITS HUNG 1-00" FROM SIDEARM CLAMP
  - 6) ALL FROST SHOULD BE PLACED ON THE SIDE CLOSEST TO LENS OF FIXTURE

THIS DRAWING REPRESENTS DESIGN INTENT, VISUAL CONCEPTS, AND CONSTRUCTION SUGGESTIONS ONLY. IT DOES NOT REPLACE THE KNOWLEDGE AND ADVICE OF A LICENSED STRUCTURAL ENGINEER.

THE DESIGNER IS UNQUALIFIED TO DETERMINE STRUCTURAL APPROPRIATENESS OF THIS DESIGN AND WILL NOT ASSUME RESPONSIBILITY FOR IMPROPER ENGINEERING, IMPLEMENTATION, OR HANDLING OF THE ELEMENTS OF THIS DESIGN.

THE IMPLEMENTATION OF THIS DESIGN MUST COMPLY WITH THE MOST STRINGENT APPLICABLE FEDERAL AND LOCAL SAFETY AND FIRE CODES.

Directed By: Danielle Kay  
 Lighting Design By: Em Moore  
 +1 (415) 450 5198

**EMMA: NO ONE BUT HERSELF**  
 Revision No. 1, January 19th 2026  
 405 Hilgard Ave,  
 Los Angeles, CA 90025

SR SECTION 1/2" SCALE	
Project Manager Christina Vacciano	Project ID The Freud Playhouse
Drawn By EFM	Scale 1/2" = 10'
Reviewed By Libby Zamiska & Colin Corralle	Sheet No. 9
Date 1/20/2026	of 9

# Vectorworks Educational Version