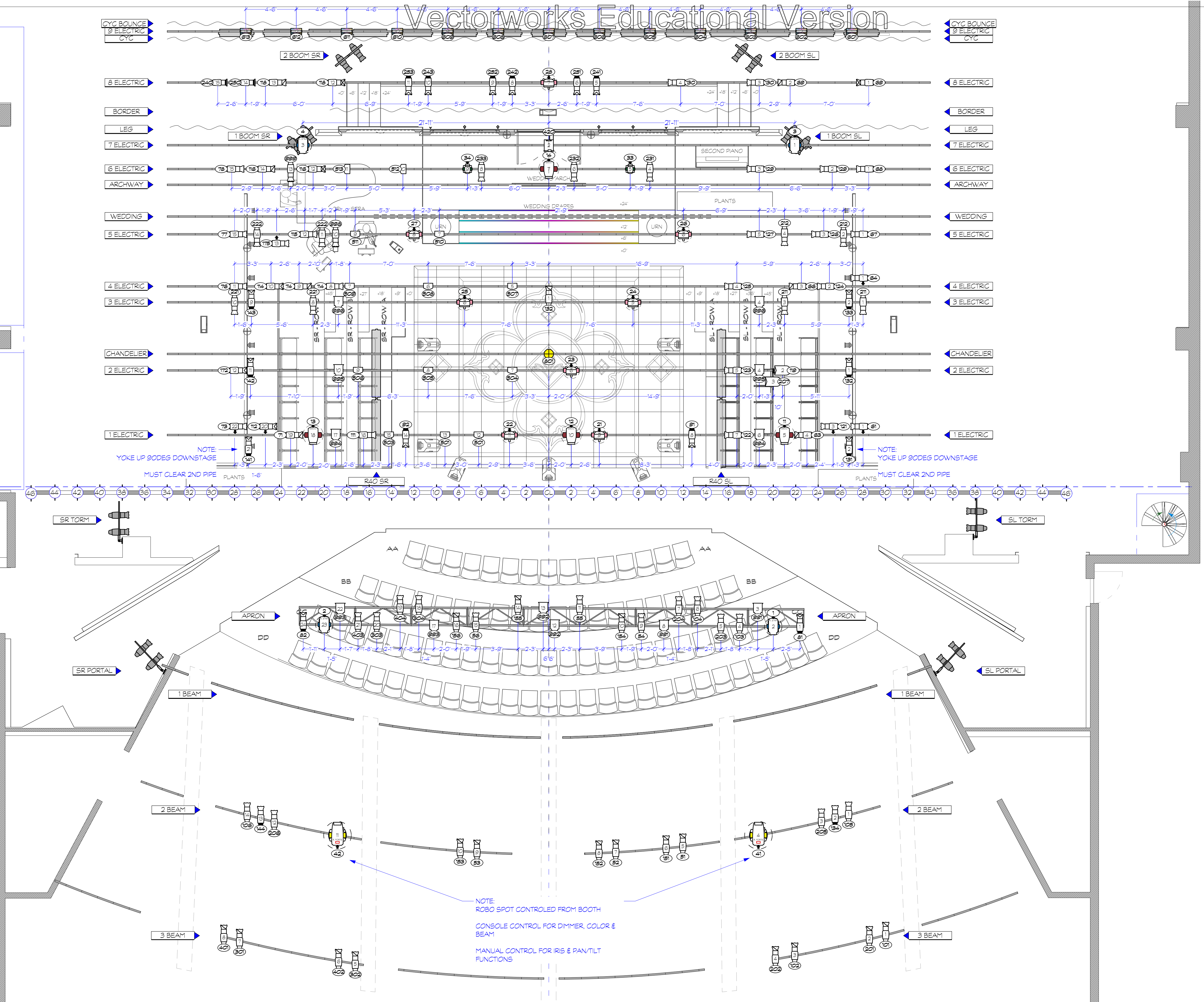


30'-0"	Cyc Bounce	34
23'-0"	9th Electric	33
30'-0"	Cyc	32
41'-0"		31
40'-0"		30
23'-0"	8th Electric	29
30'-0"	Border	28
30'-0"	Legs	27
24'-10"	7th Electric	26
24'-10"	6th Electric	25
24'-10"	Archway	24
00'-00"		23
00'-00"		22
00'-00"	Wedding Drope	21
24'-10"	5th Electric	19
00'-00"		18
00'-00"		17
00'-00"		16
00'-00"		15
24'-10"	4th Electric	14
00'-00"		13
00'-00"		12
00'-00"		11
24'-10"	Chandelier	10
24'-10"	2nd Electric	9
00'-00"		8
00'-00"		7
00'-00"		6
24'-10"	1st Electric	5
00'-00"		4
00'-00"		3
00'-00"		2
3'-04"	Main Drope	1
0'-00"	US Elevator Edge	0



INSTRUMENT LIST		
Symbol	Description	Count
[Symbol]	Robo Lighting Robin	2
[Symbol]	Forre FS @1250 W	
[Symbol]	Ayrton Straddle Profile	4 @630 W
[Symbol]	GLP Impression 5500	4 @750 W
[Symbol]	GLP Impression X5	8 @710 W
[Symbol]	Chauvet Rogue R1 Wash4	@161 W
[Symbol]	Altman Spectra Cyc	13 @100w
[Symbol]	ETC Source 4 19deg	15 @575 W
[Symbol]	ETC Source 4 26deg	53 @575 W
[Symbol]	ETC Source 4 36deg	44 @575 W
[Symbol]	ETC Source 4 50deg	2 @575 W
[Symbol]	ETC Source 4 36deg	13 750 W @750 W
[Symbol]	ETC Source 4 50deg	21 750 W @750 W
[Symbol]	ETC Source 4 70deg	2 750 W @750 W
[Symbol]	ETC Source4 Fresnel	8 @750 W
[Symbol]	Altman PAR 64 WFL	2 @1 W
[Symbol]	Selecon Compact 6'	12 Fresnel @0.75 W
[Symbol]	Light Instr USITT PAR	12 MR-16 Birdie-WFL @65 W
[Symbol]	Light Instr USITT 10BP	8 @1000 W
[Symbol]	ADJ Pinspot 38	16 @30 W
[Symbol]	Altman R40 4 Circ 6ft 4	@12 W
[Symbol]	NSI Colortran For Cyc	15 2 Cell @2 W
[Symbol]	USITT Practical Symbol 11	@0 W

ACCESSORY & SFX LIST	
[Symbol]	Look Solutions Unique 1 2.1 @1500 W

Typical Notation	
[Symbol]	Unit Number
[Symbol]	Chasing

- General Notes**
- 1) MEASUREMENTS MADE FROM CENTER OF PIPE UNLESS OTHERWISE NOTED
 - 2) ALL UNITS ARE TO HAVE APPROPRIATE FOCUS SLACK AND APPROPRIATE SAFETY HARDWARE
 - 3) PLEASE HAVE SPARE R119 & R132 AVAILABLE AT FOCUS
 - 4) ALL SIDE-ARMED OVERHEAD UNITS HUNG 1'-00" FROM SIDEARM CLAMP
 - 5) ALL FROST SHOULD BE PLACED ON THE SIDE CLOSEST TO LENS OF FIXTURE

THIS DRAWING REPRESENTS DESIGN INTENT, VISUAL CONCEPTS, AND CONSTRUCTION SUGGESTIONS ONLY. IT DOES NOT REPLACE THE KNOWLEDGE AND ADVICE OF A LICENSED STRUCTURAL ENGINEER.

THE DESIGNER IS UNQUALIFIED TO DETERMINE STRUCTURAL APPROPRIATENESS OF THIS DESIGN AND WILL NOT ASSUME RESPONSIBILITY FOR PROPER ENGINEERING, IMPLEMENTATION, OR HANDLING OF THE ELEMENTS OF THIS DESIGN.

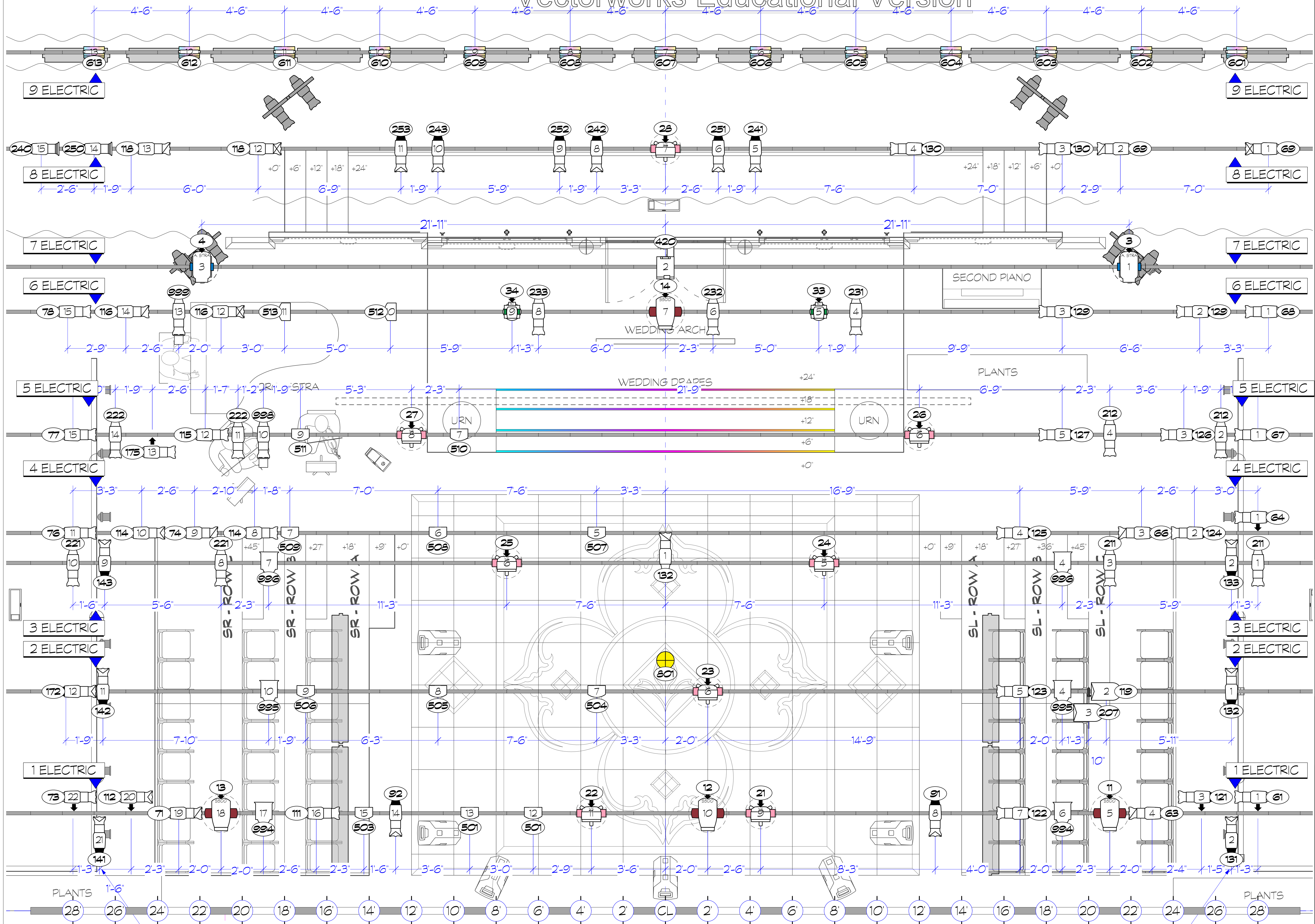
THE IMPLEMENTATION OF THIS DESIGN MUST COMPLY WITH THE MOST STRINGENT APPLICABLE FEDERAL AND LOCAL SAFETY AND FIRE CODES.

Directed By: Danielle Kay
 Lighting Design By: Em Moore
 +1 (415) 450 5198

EMMA: NO ONE BUT HERSELF

FINAL REV No. 3 MAR 15th 2026

OVERHEAD GROUNDPLAN	
Project Manager: Christina Vacciano	Project ID: The Freud Playhouse
Drawn By: EFM	Scale: 1/4" = 10'
Reviewed By: Libby Zamiska & Colin Coralle	Sheet No: 1
Date: 3/15/2026	
VAN File Name: EMMA_OH_PORTAL01.dwg	9

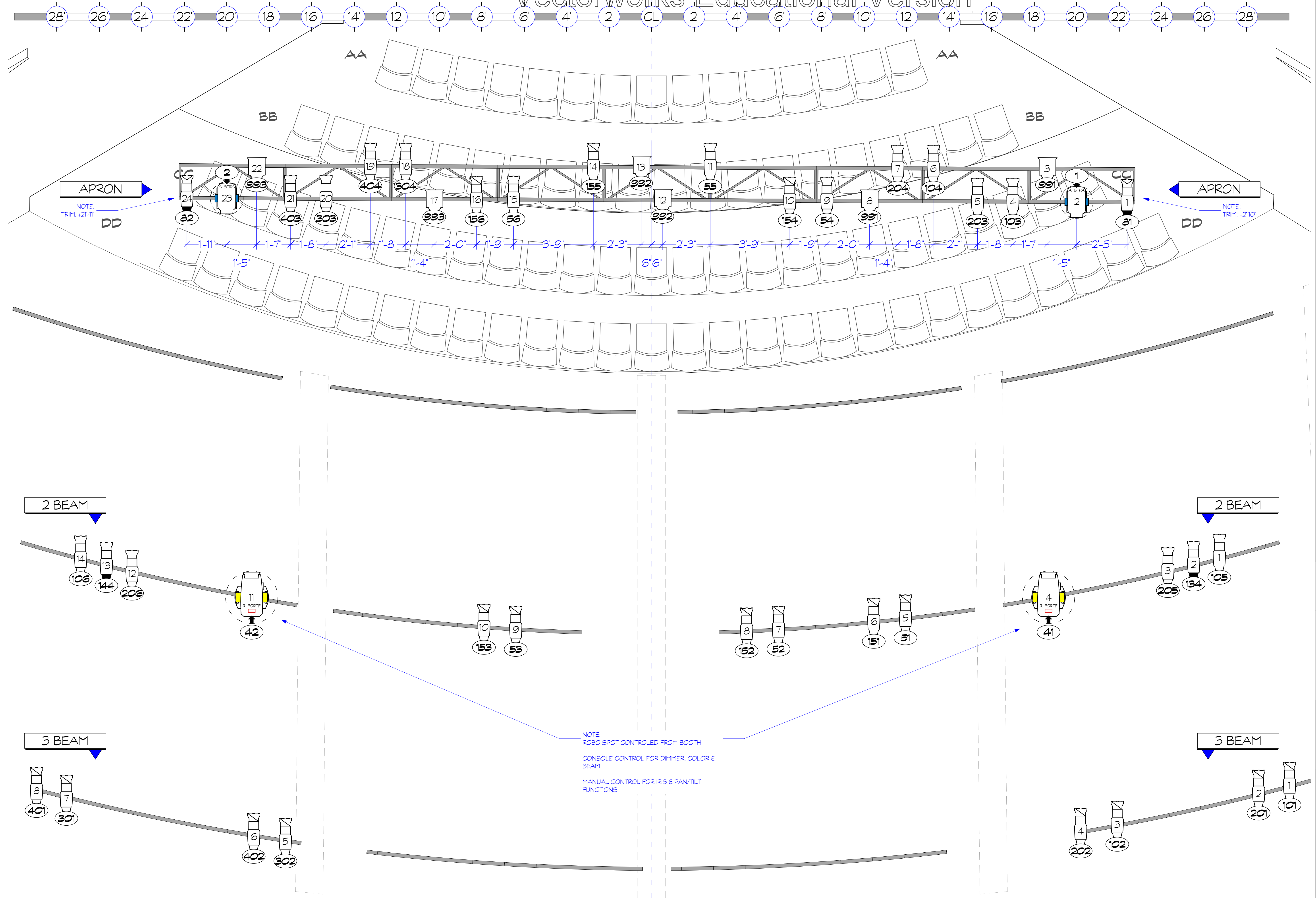


INSTRUMENT LIST		
Symbol	Description	Count
	Robe Lighting Robin 2	2
	Forre FS @1250 W	
	Ayrton Straddle Profile 4 @630 W	4
	GLP Impression 5500 4 @750 W	4
	GLP Impression XS 8 @710 W	8
	Chauvet Rogue R1 Wash4 @161 W	4
	Altman Spectra Cyc @100w	13
	ETC Source 4 19deg @575 W	15
	ETC Source 4 26deg @575 W	53
	ETC Source 4 36deg @575 W	44
	ETC Source 4 50deg @575 W	2
	ETC Source 4 36deg 750 W @750 W	13
	ETC Source 4 50deg 750 W @750 W	21
	ETC Source 4 70deg 750 W @750 W	2
	ETC Source 4 Fresnel @750 W	8
	Altman PAR 64 WFL @91 W	2
	Selecon Compact 6" Fresnel @0.75 W	12
	Light Instr: USITT PAR 12 MR-16 Birdie-WFL @65 W	12
	Light Instr: USITT 10BP @1000 W	8
	ADJ Pinspot 38 @30 W	16
	Altman R40 4 Circ 6ft 4 @12 W	
	NSI Colortran For Cyc 15 2 Cell @2 W	
	USITT Practical Symbol 11 @0 W	
ACCESSORY & SFX LIST		
	Look Solutions Unique 2.1 @1500 W	1
Typical Notation		
	Unit Number	
	Crating	
General Notes		
1) MEASUREMENTS MADE FROM CENTER OF PIPE UNLESS OTHERWISE NOTED		
2) ALL UNITS ARE TO HAVE APPROPRIATE FOCUS SLACK AND APPROPRIATE SAFETY HARDWARE		
4) PLEASE HAVE SPARE R119 & R132 AVAILABLE AT FOCUS		
5) ALL SIDE-ARMED OVERHEAD UNITS HUNG 1-00" FROM SIDEARM CLAMP		
6) ALL FROST SHOULD BE PLACED ON THE SIDE CLOSEST TO LENS OF FIXTURE		
THIS DRAWING REPRESENTS DESIGN INTENT, VISUAL CONCEPTS, AND CONSTRUCTION SUGGESTIONS ONLY. IT DOES NOT REPLACE THE KNOWLEDGE AND ADVICE OF A LICENSED STRUCTURAL ENGINEER.		
THE DESIGNER IS UNQUALIFIED TO DETERMINE STRUCTURAL APPROPRIATENESS OF THIS DESIGN AND WILL NOT ASSUME RESPONSIBILITY FOR IMPROPER ENGINEERING, IMPLEMENTATION, OR HANDLING OF THE ELEMENTS OF THIS DESIGN.		
THE IMPLEMENTATION OF THIS DESIGN MUST COMPLY WITH THE MOST STRINGENT APPLICABLE FEDERAL AND LOCAL SAFETY AND FIRE CODES.		
Directed By: Danielle Kay Lighting Design By: Em Moore +1 (415) 450 5198		
EMMA: NO ONE BUT HERSELF		
FINAL REV No. 3 MAR 15th 2026		
ELECTRICS GROUNDPLAN		
Project Manager: Christina Vacciano	Project ID: The Freud Playhouse	
Drawn By: EFM	Scale: 1/2" = 10'	
Checked By: Libby Zamiska & Colin Corralle	Sheet No.:	2
Date: 2/3/2026		
WAX File Name: EMMA_LX_PORTFOLIO_Cover1111.rvt		9

NOTE: YOKE UP BODEG DOWNSTAGE
MUST CLEAR 2ND PIPE

1 ELECTRICS GROUNDPLAN
Scale: 1/2" = 10'

NOTE: YOKE UP BODEG DOWNSTAGE
MUST CLEAR 2ND PIPE

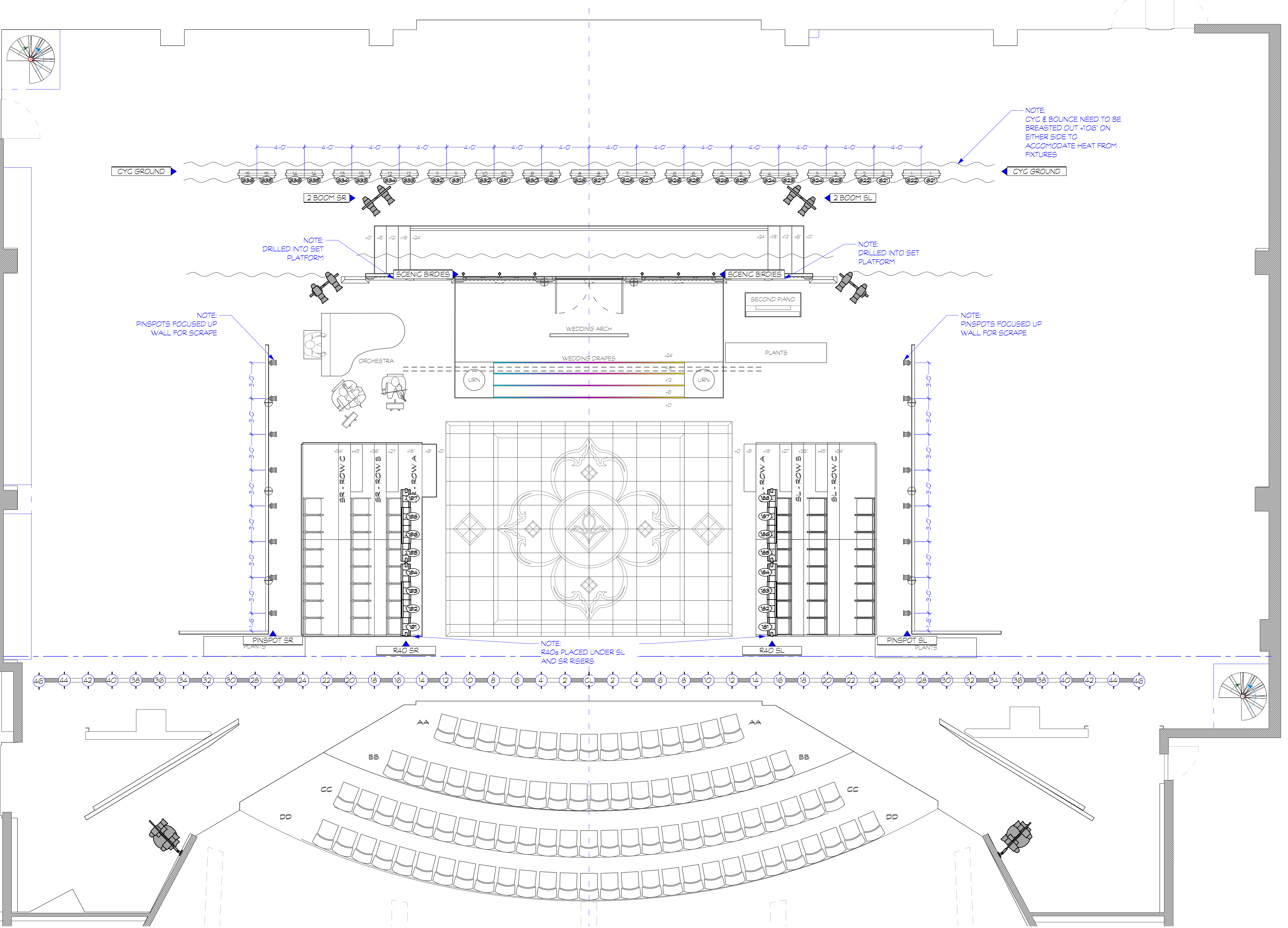


INSTRUMENT LIST		
Symbol	Description	Count
	Robo Lighting Robin	2
	Forte FS @1250 W	
	Ayrton Straddle Profile @630 W	4
	GLP Impression 5500 @750 W	4
	GLP Impression XS @710 W	8
	Chauvet Rogue R1 Wash4 @161 W	
	Altman Spectra Cyc @100w	13
	ETC Source 4 19deg @575 W	15
	ETC Source 4 26deg @575 W	53
	ETC Source 4 36deg @575 W	44
	ETC Source 4 50deg @575 W	2
	ETC Source 4 36deg 750 W @750 W	13
	ETC Source 4 50deg 750 W @750 W	21
	ETC Source 4 70deg 750 W @750 W	2
	ETC Source4 Fresnel @750 W	8
	Altman PAR 64 WFL @91 W	2
	Selecon Compact 6 Fresnel @0.75 W	12
	Light Instr USITT PAR MR-16 Birdie-WFL @65 W	12
	Light Instr USITT 10BP @1000 W	8
	ADJ Pinspot 38 @30 W	16
	Altman R40 4 Circ 6ft @12 W	4
	NSI Colortran Far Cyc 2 Cell @2 W	15
	USITT Practical Symbol 11 @0 W	
ACCESSORY & SFX LIST		
	Look Solutions Unique 2.1 @1500 W	1
Typical Notation		
	Unit Number	
	Chang	
General Notes		
1) MEASUREMENTS MADE FROM CENTER OF PIPE UNLESS OTHERWISE NOTED		
2) ALL UNITS ARE TO HAVE APPROPRIATE FOCUS SLACK AND APPROPRIATE SAFETY HARDWARE		
4) PLEASE HAVE SPARE R19 & R182 AVAILABLE AT FOCUS		
5) ALL SIDE-ARMED OVERHEAD UNITS HUNG 1'-0" FROM SIDEARM CLAMP		
6) ALL FROST SHOULD BE PLACED ON THE SIDE CLOSEST TO LENS OF FIXTURE		
THIS DRAWING REPRESENTS DESIGN INTENT, VISUAL CONCEPTS, AND CONSTRUCTION SUGGESTIONS ONLY. IT DOES NOT REPLACE THE KNOWLEDGE AND ADVICE OF A LICENSED STRUCTURAL ENGINEER.		
THE DESIGNER IS UNQUALIFIED TO DETERMINE STRUCTURAL APPROPRIATENESS OF THIS DESIGN AND WILL NOT ASSUME RESPONSIBILITY FOR IMPROPER ENGINEERING, IMPLEMENTATION, OR HANDLING OF THE ELEMENTS OF THIS DESIGN.		
THE IMPLEMENTATION OF THIS DESIGN MUST COMPLY WITH THE MOST STRINGENT APPLICABLE FEDERAL AND LOCAL SAFETY AND FIRE CODES.		
Directed By: Danielle Kay Lighting Design By: Em Moore +1 (415) 450 5198		
EMMA: NO ONE BUT HERSELF		
FINAL REV No. 3 MAR 15th 2026		
FOH GROUNDPLAN		
Project Manager Christina Vacciano	Project ID The Freud Playhouse	
Drawn By EFM	Scale 1/2" = 10'	
Reviewed By Libby Zamiska & Colin Corralle	Sheet No. 3	
Date 2/3/2026		
VAN File Name EMMA_FOH_GROUNDPLAN.rvt		9

NOTE:
ROBO SPOT CONTROLLED FROM BOOTH
CONSOLE CONTROL FOR DIMMER, COLOR & BEAM
MANUAL CONTROL FOR IRIS & PAN/TILT FUNCTIONS

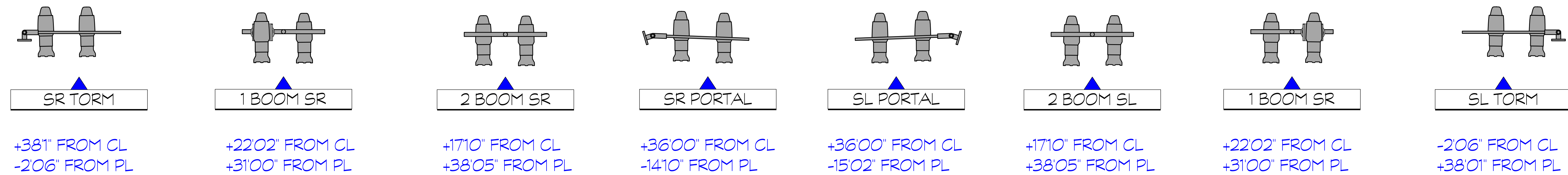
1 FOH GROUNDPLAN
Scale: 1/2" = 1'-0"

30'-0"	Cyc Bounce	34
23'-0"	9th Electric	33
30'-0"	Cyc	32
41'-0.5"		31
40'-0.5"		30
23'-0"	8th Electric	29
30'-0"	Border	28
30'-0"	Legs	27
24'-10"	7th Electric	26
24'-10"	6th Electric	25
24'-10"	Archway	24
00'-00"		23
00'-00"		22
00'-00"	Wedding Drapes	21
00'-00"		20
24'-10"	5th Electric	19
00'-00"		18
00'-00"		17
00'-00"		16
00'-00"		15
24'-10"	4th Electric	14
24'-10"	3rd Electric	13
00'-00"		12
00'-00"		11
24'-10"	Chandelier	10
24'-10"	2nd Electric	9
00'-00"		8
00'-00"		7
00'-00"		6
24'-10"	1st Electric	5
00'-00"		4
00'-00"		3
00'-00"		2
3'-04"	Main Drope	1
0'-00"	US Elevator Edge	0



INSTRUMENT LIST		
Symbol	Description	Count
	Robe Lighting Robin Forte FS @1250 W	2
	Ayrton Straddle Profile @630 W	4
	GLP Impression 5500 @750 W	4
	GLP Impression X5 @710 W	8
	Chauvet Rogue R1 Wash @161 W	4
	Altman Spectra Cyc @100w	13
	ETC Source 4 19deg @575 W	15
	ETC Source 4 26deg @575 W	53
	ETC Source 4 36deg @575 W	44
	ETC Source 4 50deg @575 W	2
	ETC Source 4 36deg 750 W @750 W	13
	ETC Source 4 50deg 750 W @750 W	21
	ETC Source 4 70deg 750 W @750 W	2
	ETC Source 4 Fresnel @750 W	8
	Altman PAR 64 WFL @91 W	2
	Selecon Compact 6" Fresnel @0.75 W	12
	Light Instr: USITT PAR MR-16 Birdie-WFL @65 W	12
	Light Instr: USITT 10BP @1000 W	8
	ADJ Pinpoint 38 @30 W	16
	Altman R40 4 Circ 6ft @12 W	4
	NSI Colortran Far Cyc 2 Cell @2 W	15
	USITT Practical Symbol 11 @0 W	11
ACCESSORY & SFX LIST		
	Look Solutions Unique 2.1 @1500 W	1
Typical Notation		
	Unit Number	
	Quantity	
General Notes		
1) MEASUREMENTS MADE FROM CENTER OF PIPE UNLESS OTHERWISE NOTED		
2) ALL UNITS ARE TO HAVE APPROPRIATE FOCUS SLACK AND APPROPRIATE SAFETY HARDWARE		
3) PLEASE HAVE SPARE R19 & R32 AVAILABLE AT FOCUS		
4) ALL SIDE-ARMED OVERHEAD UNITS HUNG 1'-00" FROM SIDARM CLAMP		
5) ALL FROST SHOULD BE PLACED ON THE SIDE CLOSEST TO ENDS OF FIXTURE		
THIS DRAWING REPRESENTS DESIGN INTENT, VISUAL CONCEPTS, AND CONSTRUCTION SUGGESTIONS ONLY. IT DOES NOT REPLACE THE KNOWLEDGE AND ADVICE OF A LICENSED STRUCTURAL ENGINEER.		
THE DESIGNER IS UNQUALIFIED TO DETERMINE STRUCTURAL APPROPRIATENESS OF THIS DESIGN AND WILL NOT ASSUME RESPONSIBILITY FOR PROPER ENGINEERING, IMPLEMENTATION, OR HANDLING OF THE ELEMENTS OF THIS DESIGN.		
THE IMPLEMENTATION OF THIS DESIGN MUST COMPLY WITH THE MOST STRINGENT APPLICABLE FEDERAL AND LOCAL SAFETY AND FIRE CODES.		
Directed By: Danielle Kay Lighting Design By: Em Moore +1 (415) 450 5198		
EMMA: NO ONE BUT HERSELF		
FINAL REV No. 3 MAR 15th 2026		
DECK GROUNDPLAN		
Project Manager: Christina Vacciano	Project ID: The Freud Playhouse	
Drawn By: EFM	Scale: 1/4" = 10'	
Reviewed By: Libby Zamiska & Colin Coralle	Sheet No: 4	
Date: 2/3/2026		
VAN File Name: EMMA_VX_PORTFOLIO_Cover_1117.van		

1 DECK GROUNDPLAN
Scale: 1/4" = 1'-0"



+38" FROM CL
-206" FROM PL

+2202" FROM CL
+3100" FROM PL

+1710" FROM CL
+3805" FROM PL

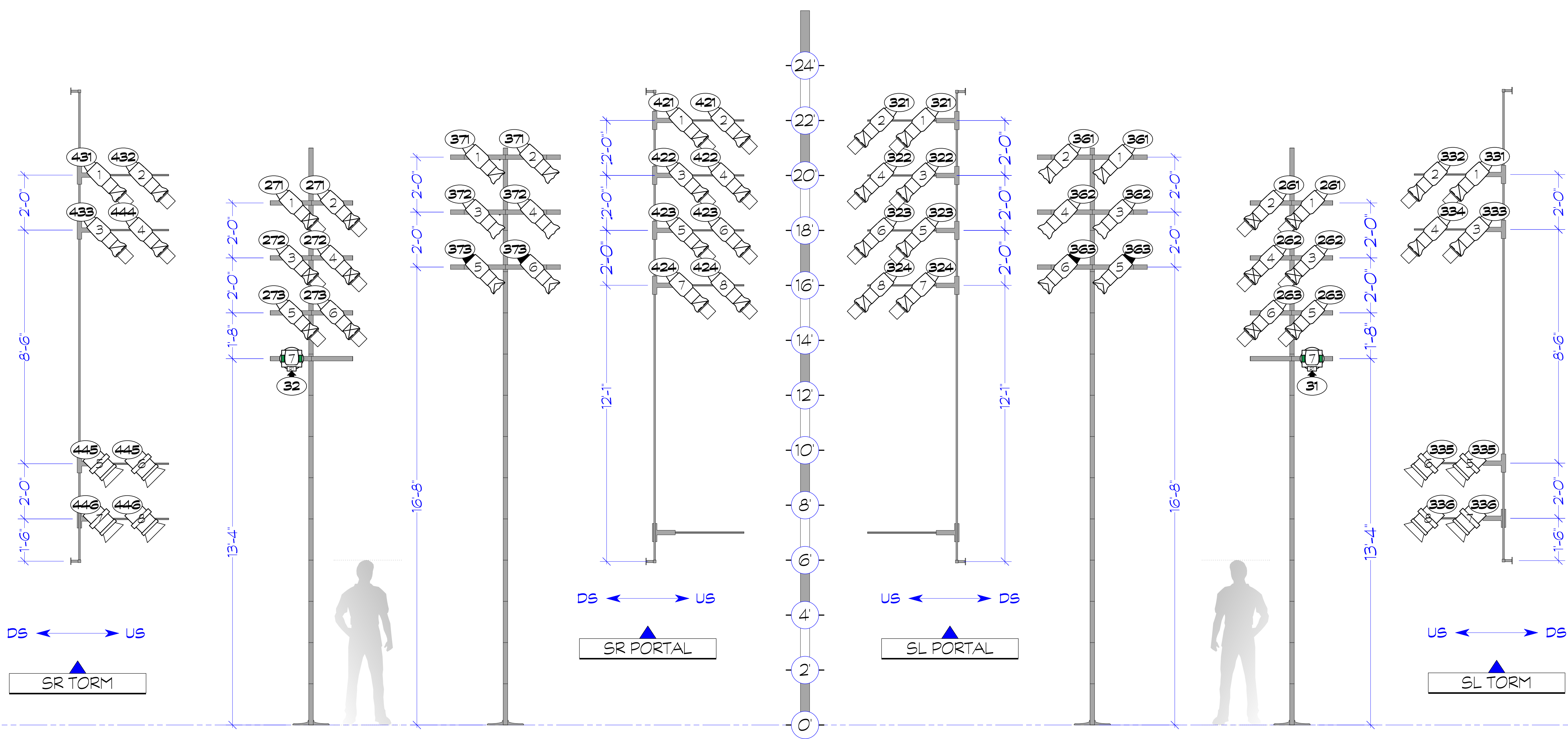
+3600" FROM CL
-1410" FROM PL

+3600" FROM CL
-1502" FROM PL

+1710" FROM CL
+3805" FROM PL

+2202" FROM CL
+3100" FROM PL

-206" FROM CL
+3801" FROM PL



DS ← → US

DS ← → US

DS ← → US

DS ← → US

US ← → DS

US ← → DS

US ← → DS

US ← → DS

① ADDED POSITIONS
Scale: 1/2" = 1'-0"

NOTE 2-FER CHANNELING PER POSITION

INSTRUMENT LIST		
Symbol	Description	Count
	Robe Lighting Robin	2
	Forté FS	@1250 W
	Ayrton Straddle Profile	4 @630 W
	GLP Impression 5500	4 @750 W
	GLP Impression XS	8 @710 W
	Chauvet Rogue R1 Wash4	@161 W
	Altman Spectra Cyc	13 @100w
	ETC Source 4 19deg	15 @575 W
	ETC Source 4 26deg	53 @575 W
	ETC Source 4 36deg	44 @575 W
	ETC Source 4 50deg	2 @575 W
	ETC Source 4 36deg 750 W	13 @750 W
	ETC Source 4 50deg 750 W	21 @750 W
	ETC Source 4 70deg 750 W	2 @750 W
	ETC Source4 Fresnel	8 @750 W
	Altman PAR 64 WFL	2 @1 W
	Selecon Compact 6	12 Fresnel @0.75 W
	Light Instr. USITT PAR	12 MR-16 Birdie-WFL @65 W
	Light Instr. USITT 10BP	8 @1000 W
	ADJ Pinpoint 38	16 @30 W
	Altman R40 4 Circ 6ft	4 @12 W
	NSI Colortran For Cyc	15 2 Cell @2 W
	USITT Practical Symbol 11	@0 W

ACCESSORY & SFX LIST	
	Look Solutions Unique
	2.1 @1500 W

- Typical Notation**
- Unit Number
Change
- General Notes**
- MEASUREMENTS MADE FROM CENTER OF PIPE UNLESS OTHERWISE NOTED
 - ALL UNITS ARE TO HAVE APPROPRIATE FOCUS SLACK AND APPROPRIATE SAFETY HARDWARE
 - PLEASE HAVE SPARE R19 & R132 AVAILABLE AT FOCUS
 - ALL SIDE-ARMED OVERHEAD UNITS HUNG 1'-0" FROM SIDEARM CLAMP
 - ALL FROST SHOULD BE PLACED ON THE SIDE CLOSEST TO ENDS OF FIXTURE

THIS DRAWING REPRESENTS DESIGN INTENT, VISUAL CONCEPTS, AND CONSTRUCTION SUGGESTIONS ONLY. IT DOES NOT REPLACE THE KNOWLEDGE AND ADVICE OF A LICENSED STRUCTURAL ENGINEER.

THE DESIGNER IS UNQUALIFIED TO DETERMINE STRUCTURAL APPROPRIATENESS OF THIS DESIGN AND WILL NOT ASSUME RESPONSIBILITY FOR IMPROPER ENGINEERING, IMPLEMENTATION, OR HANDLING OF THE ELEMENTS OF THIS DESIGN.

THE IMPLEMENTATION OF THIS DESIGN MUST COMPLY WITH THE MOST STRINGENT APPLICABLE FEDERAL AND LOCAL SAFETY AND FIRE CODES.

Directed By: Danielle Kay
Lighting Design By: Em Moore
+1 (415) 450 5198

EMMA: NO ONE BUT HERSELF

FINAL REV No. 3 MAR 15th 2026

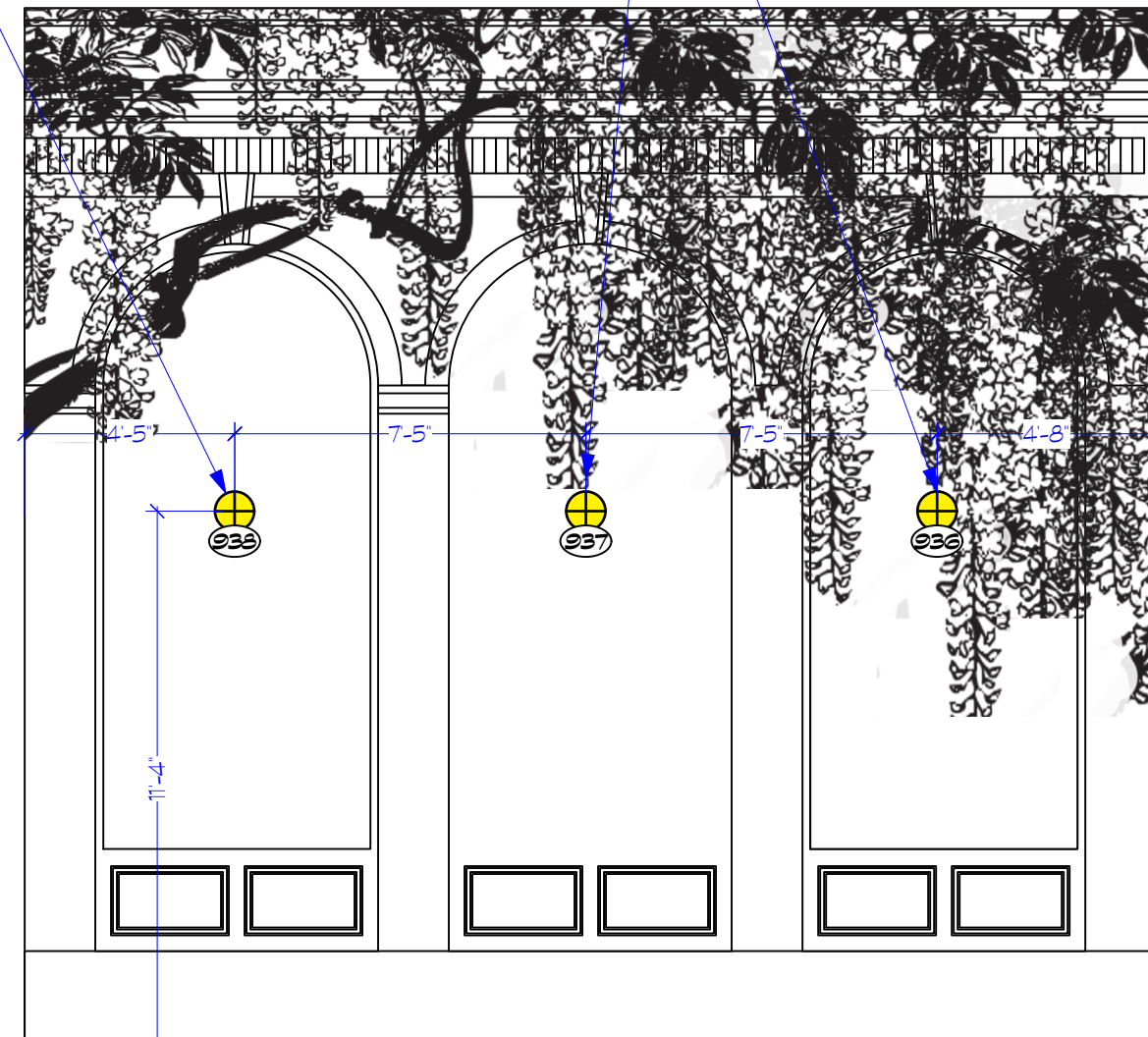
ADDED POSITIONS	
Project Manager Christina Vacciano	Project ID The Freud Playhouse
Drawn By EFM	Scale 1/2" = 1'-0"
Reviewed By Libby Zamiska & Colin Corralle	Sheet No. 5
Date 2/3/2026	
WYN File Name EMMA_LX_PORTFOLIO_Cover_1117.dwg	9

Vectorworks Educational Version

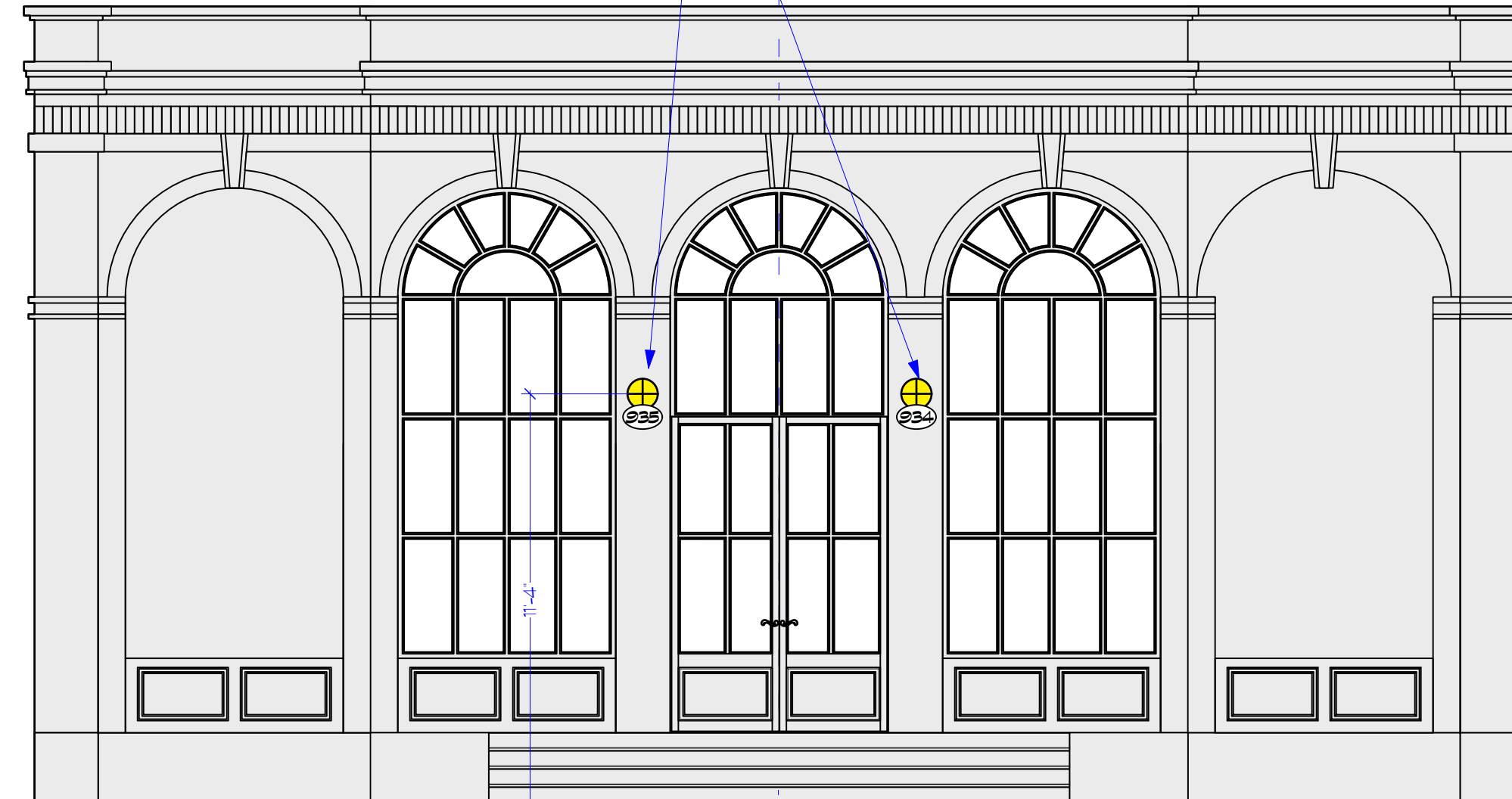
REFERENCE IMAGE



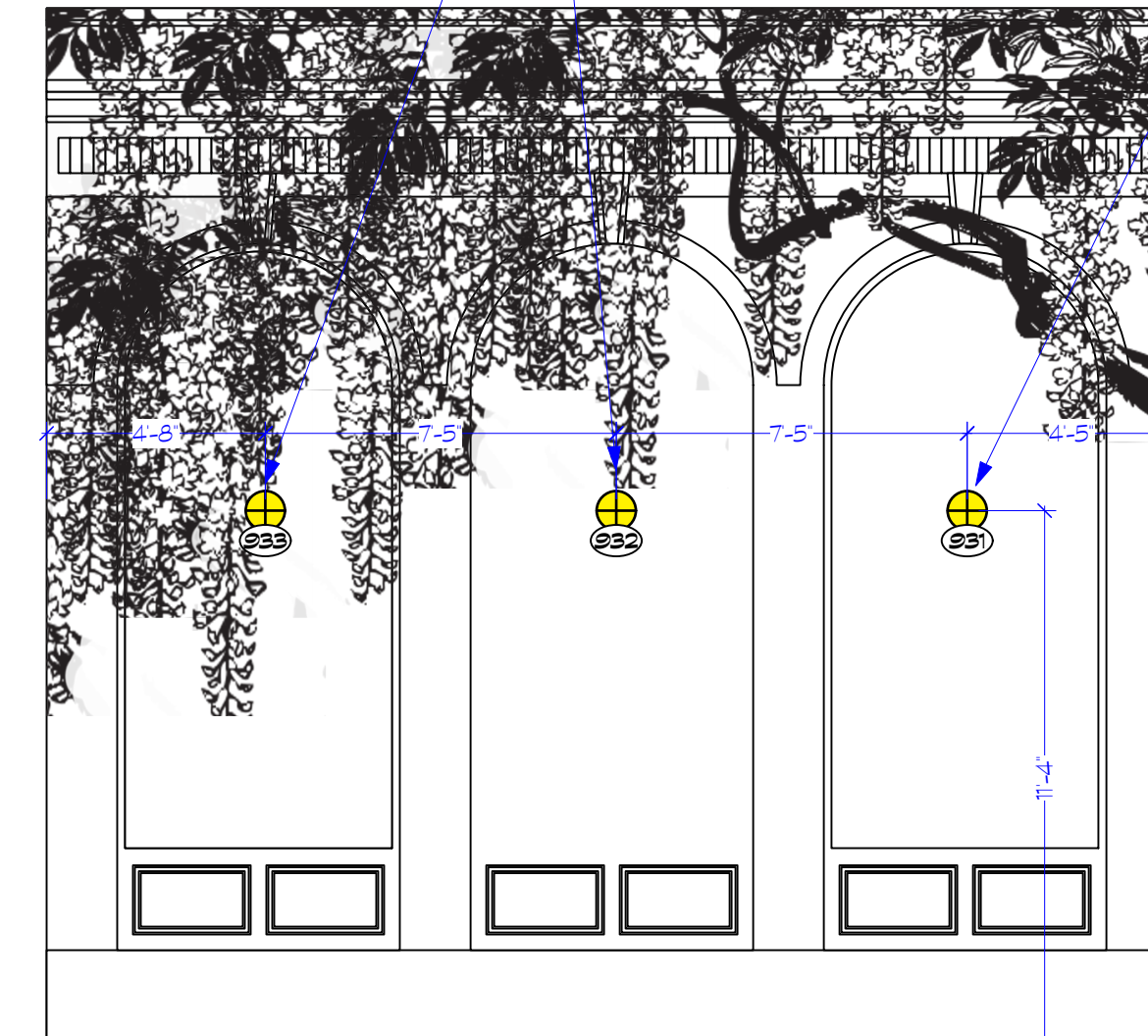
NOTE:
2 BULBS PER FIXTURES A19 BULB E26 BASE
SPEC: STOCK INCANDESCENT LAMP
GLASS LAMP SHADE PROVIDED BY SCENIC, IMAGE ABOVE FOR REFERENCE



NOTE:
2 BULBS PER FIXTURES A19 BULB E26 BASE
SPEC: STOCK INCANDESCENT LAMP
GLASS LAMP SHADE PROVIDED BY SCENIC, IMAGE ABOVE FOR REFERENCE

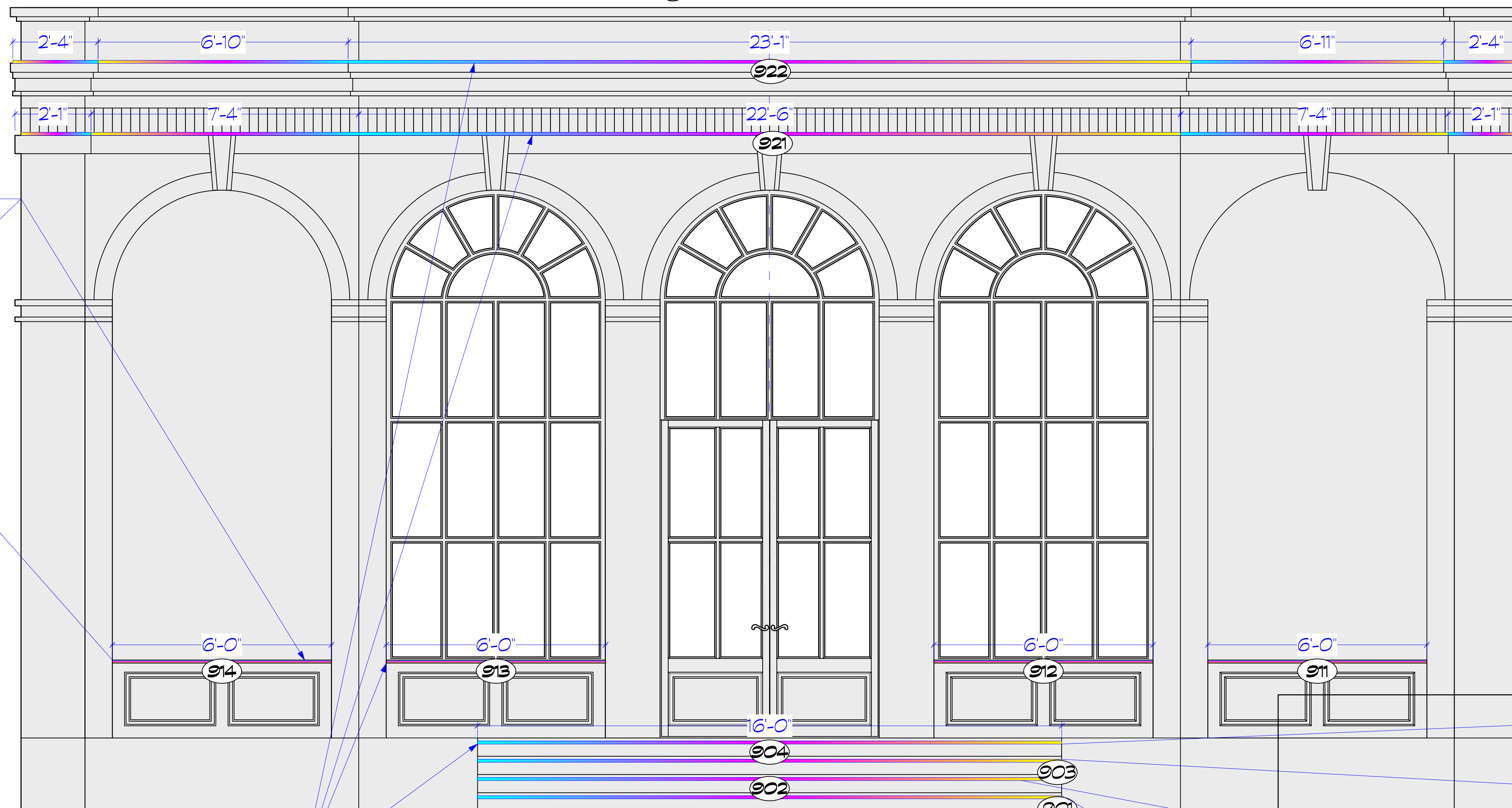


NOTE:
2 BULBS PER FIXTURES A19 BULB E26 BASE
SPEC: STOCK INCANDESCENT LAMP
GLASS LAMP SHADE PROVIDED BY SCENIC, IMAGE ABOVE FOR REFERENCE



1 SCENIC SCONCES

Scale: 1/4" = 1'-0"



2 LED TAPE

Scale: 1/2" = 1'-0"

NOTE SCALE CHANGE

SPEC: Amazon.com: BTF-LIGHTING 5050 RGBW RGB+Cool White(6000K-7000K) 150RGB+150White LED Tape Light 5m 16.4ft

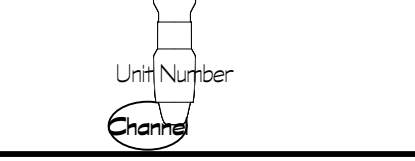
INSTRUMENT LIST

Symbol	Description	Count
[Symbol]	Robe Lighting Robin Forte FS @1250 W	2
[Symbol]	Ayrton Straddle Profile @630 W	4
[Symbol]	GLP Impression 5500 @750 W	4
[Symbol]	GLP Impression XS @710 W	8
[Symbol]	Chauvet Rogue R1 Wash @161 W	4
[Symbol]	Altman Spectra Cyc @100w	13
[Symbol]	ETC Source 4 19deg @575 W	15
[Symbol]	ETC Source 4 26deg @575 W	53
[Symbol]	ETC Source 4 36deg @575 W	44
[Symbol]	ETC Source 4 50deg @575 W	2
[Symbol]	ETC Source 4 36deg 750 W @750 W	13
[Symbol]	ETC Source 4 50deg 750 W @750 W	21
[Symbol]	ETC Source 4 70deg 750 W @750 W	2
[Symbol]	ETC Source4 Fresnel @750 W	8
[Symbol]	Altman PAR 64 WFL @1 W	2
[Symbol]	Selecon Compact 6" Fresnel @0.75 W	12
[Symbol]	Light Instr USITT PAR MR-16 Birdie-WFL @65 W	12
[Symbol]	Light Instr USITT 10BP @1000 W	8
[Symbol]	ADJ Pinspot 38 @30 W	16
[Symbol]	Altman R40 4 Circ 6ft @12 W	4
[Symbol]	NSI Colortran For Cyc 2 Cell @2 W	15
[Symbol]	USITT Practical Symbol 11 @0 W	11

ACCESSORY & SFX LIST

[Symbol]	Look Solutions Unique 2.1 @1500 W	1
----------	-----------------------------------	---

Typical Notation



General Notes

- MEASUREMENTS MADE FROM CENTER OF PIPE UNLESS OTHERWISE NOTED
- ALL UNITS ARE TO HAVE APPROPRIATE FOCUS SLACK AND APPROPRIATE SAFETY HARDWARE
- PLEASE HAVE SPARE R119 & R132 AVAILABLE AT FOCUS
- ALL SIDE-ARMED OVERHEAD UNITS HUNG 1'-0" FROM SIDEARM CLAMP
- ALL FROST SHOULD BE PLACED ON THE SIDE CLOSEST TO LENS OF FIXTURE

THIS DRAWING REPRESENTS DESIGN INTENT, VISUAL CONCEPTS, AND CONSTRUCTION SUGGESTIONS ONLY. IT DOES NOT REPLACE THE KNOWLEDGE AND ADVICE OF A LICENSED STRUCTURAL ENGINEER.

THE DESIGNER IS UNQUALIFIED TO DETERMINE STRUCTURAL APPROPRIATENESS OF THIS DESIGN AND WILL NOT ASSUME RESPONSIBILITY FOR IMPROPER ENGINEERING, IMPLEMENTATION, OR HANDLING OF THE ELEMENTS OF THIS DESIGN.

THE IMPLEMENTATION OF THIS DESIGN MUST COMPLY WITH THE MOST STRINGENT APPLICABLE FEDERAL AND LOCAL SAFETY AND FIRE CODES.

Directed By: Danielle Kay
Lighting Design By: Em Moore
+1 (415) 450 5198



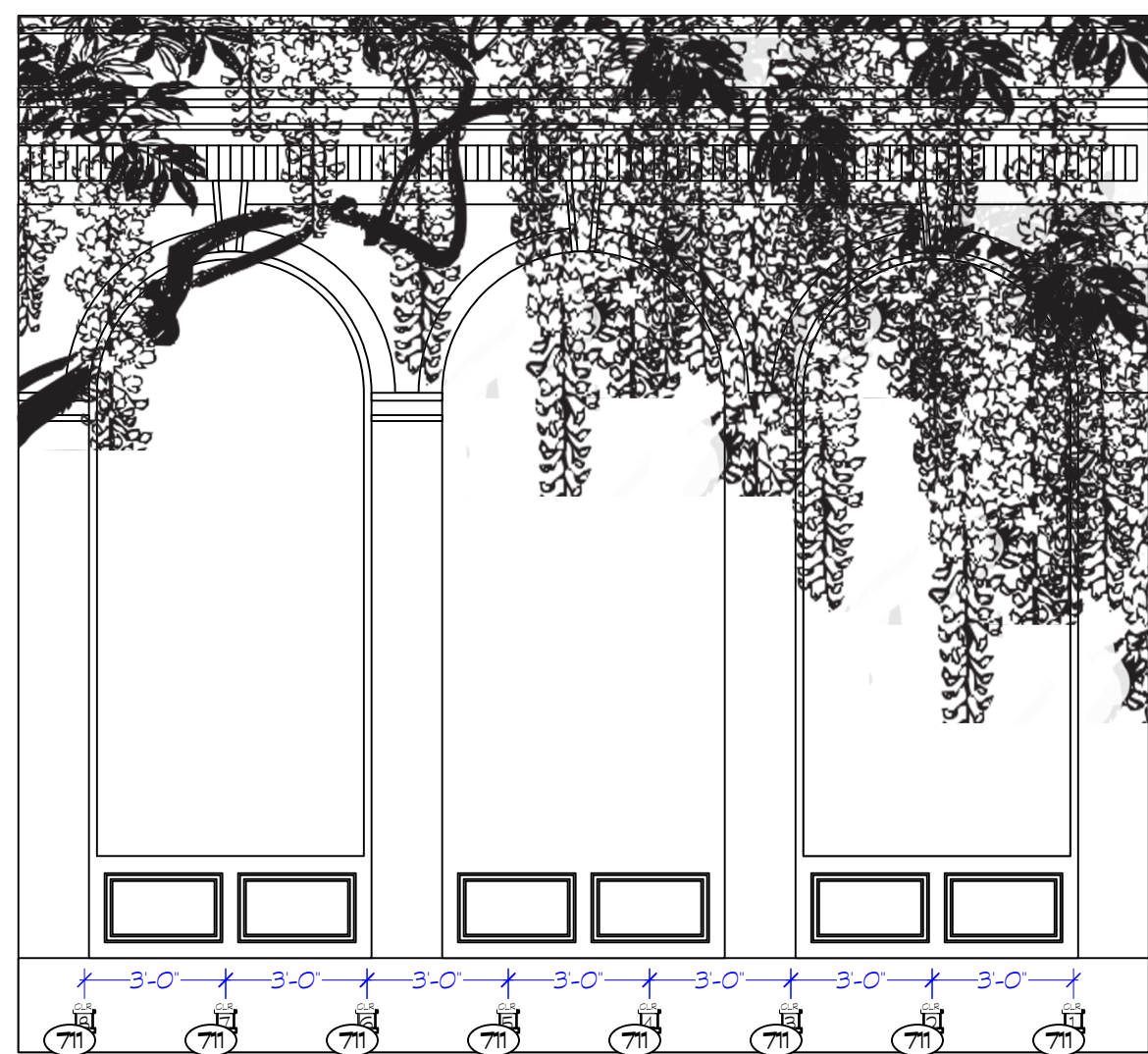
EMMA: NO ONE BUT HERSELF

FINAL REV No. 3 MAR 15th 2026

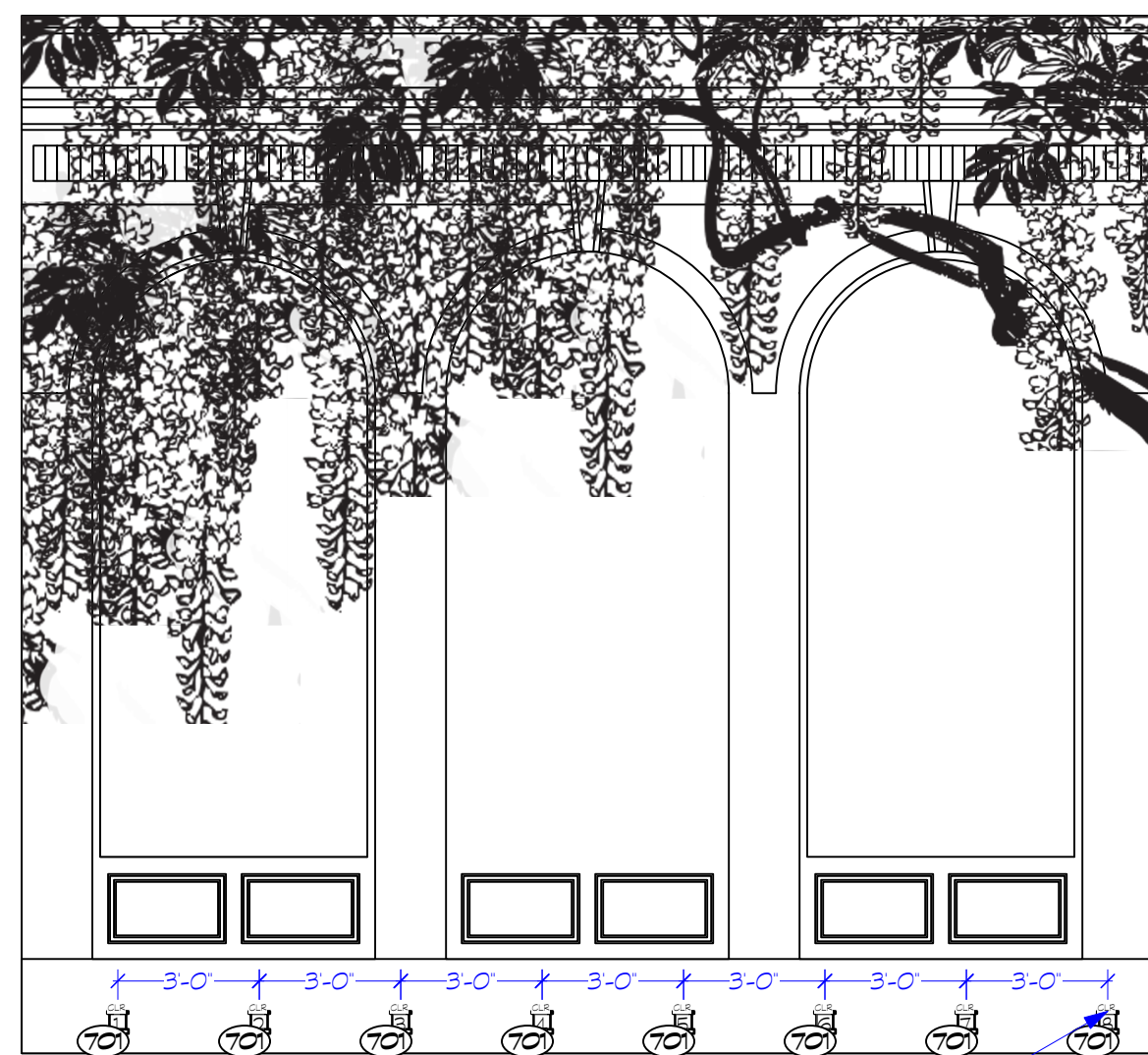
SET ELECTRICS

Project Manager: Christina Vacciano	Project ID: The Freud Playhouse
Drawn By: EFM	Scale: AS NOTED
Reviewed By: Libby Zamiska & Colin Corralle	Sheet No.:
Date: 2/3/2026	6
WAX File Name: EMMA_LX_PORTFOLIO_Cap 117.dwg	9

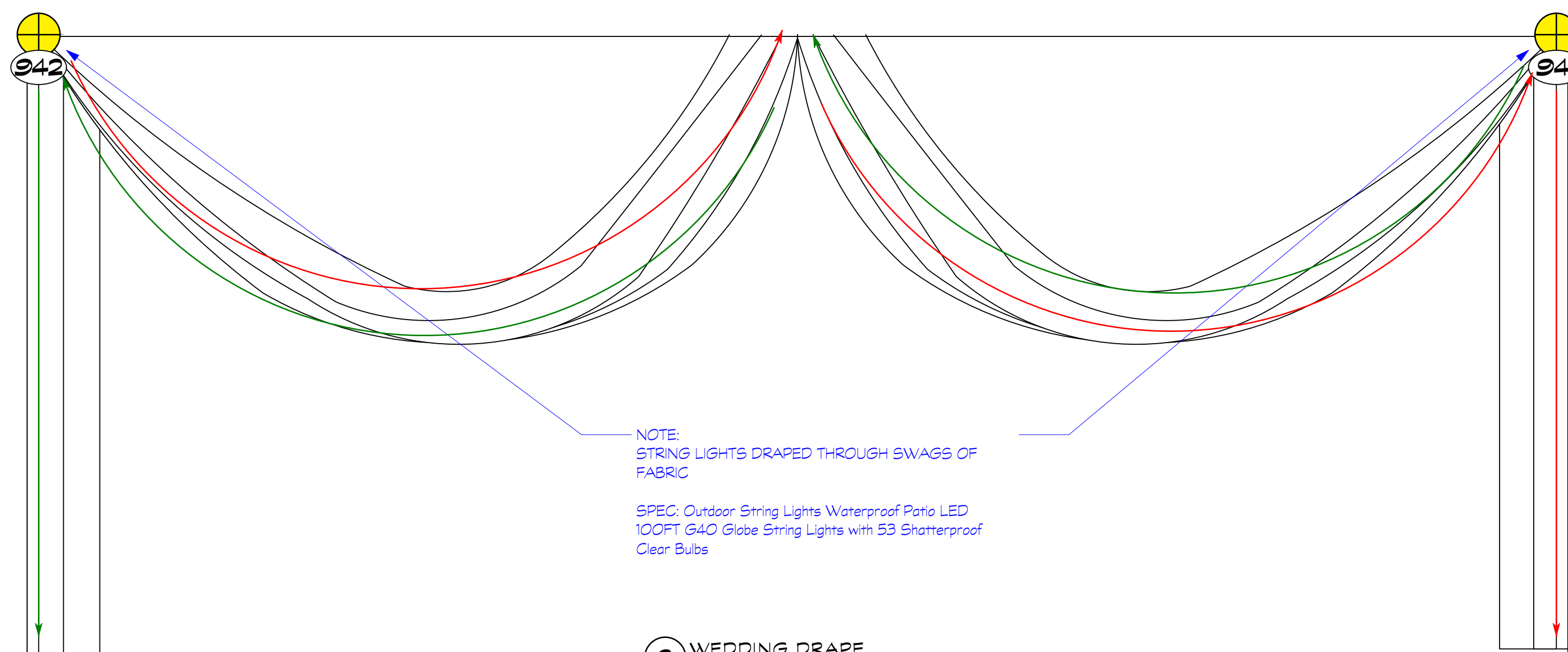
Vectorworks Educational Version



1 PINSPOT ELEVATION
Scale: 1/4" = 1'-0"



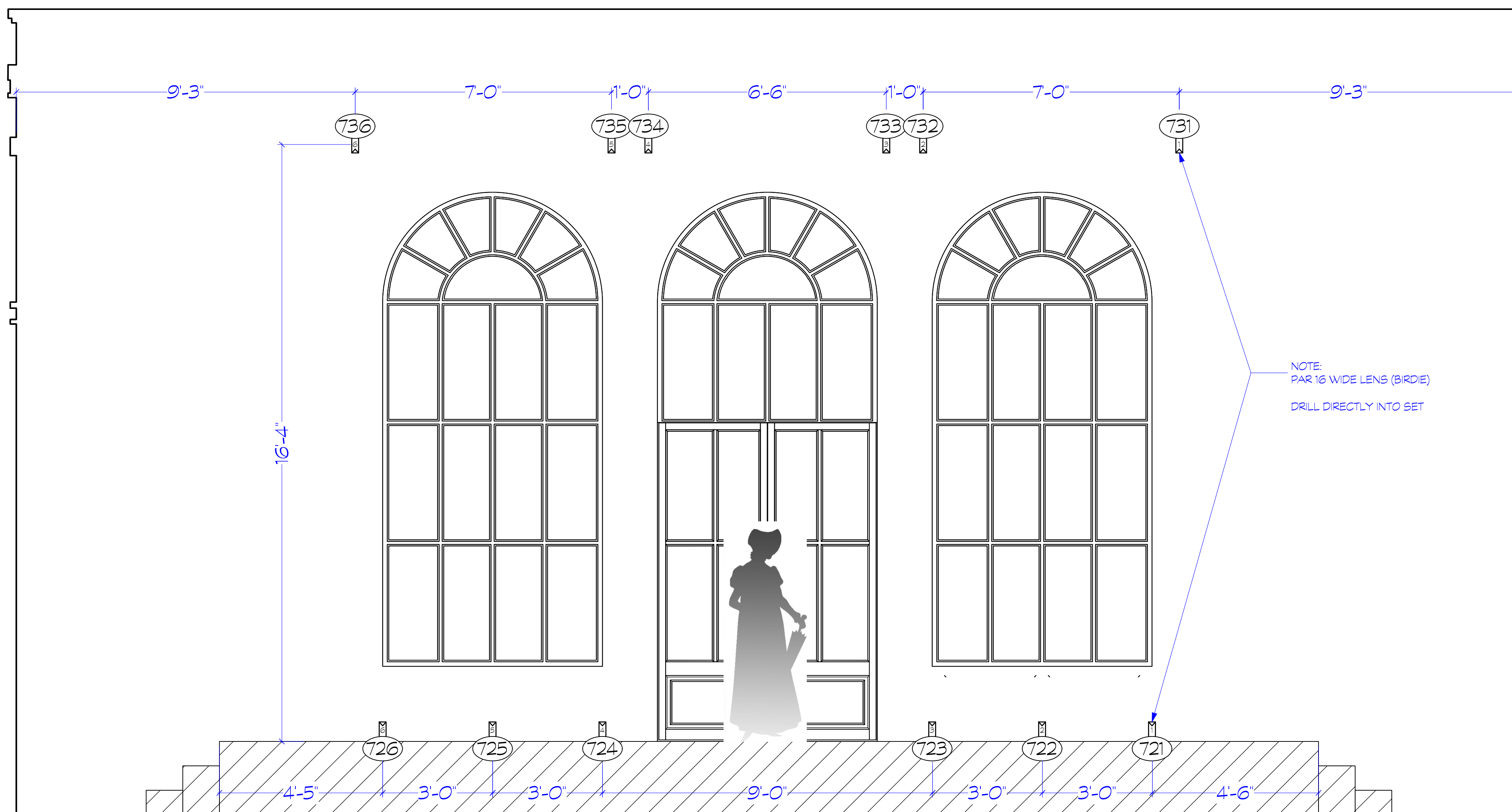
NOTE:
PINSPOTS DRILLED DIRECTLY INTO DECK
FOCUS UPWARD TO SCRAPE SCENIC WALL



NOTE:
STRING LIGHTS DRAPED THROUGH SWAGS OF FABRIC

SPEC: Outdoor String Lights Waterproof Patio LED 100FT G40 Globe String Lights with 53 Shatterproof Clear Bulbs

2 WEDDING DRAPE
Scale: 1/2" = 1'-0"



NOTE:
PAR 16 WIDE LENS (BIRDIE)
DRILL DIRECTLY INTO SET

3 BIRDIE ELEVATION
Scale: 1/2" = 1'-0"

INSTRUMENT LIST		
Symbol	Description	Count
[Symbol]	Robe Lighting Robin	2
[Symbol]	Forté FS @1250 W	
[Symbol]	Ayrton Straddle Profile @630 W	4
[Symbol]	GLP Impression 5500 @750 W	4
[Symbol]	GLP Impression XS @710 W	8
[Symbol]	Chauvet Rogue R1 Wash4 @161 W	
[Symbol]	Altman Spectra Cyc @100w	13
[Symbol]	ETC Source 4 19deg @575 W	15
[Symbol]	ETC Source 4 26deg @575 W	53
[Symbol]	ETC Source 4 36deg @575 W	44
[Symbol]	ETC Source 4 50deg @575 W	2
[Symbol]	ETC Source 4 36deg 750 W @750 W	13
[Symbol]	ETC Source 4 50deg 750 W @750 W	21
[Symbol]	ETC Source 4 70deg 750 W @750 W	2
[Symbol]	ETC Source4 Fresnel @750 W	8
[Symbol]	Altman PAR 64 WFL @1 W	2
[Symbol]	Selecon Compact 6" Fresnel @0.75 W	12
[Symbol]	Light Instr: USITT PAR MR-16 Birdie-WFL @65 W	12
[Symbol]	Light Instr: USITT 10BP @1000 W	8
[Symbol]	ADJ Pinspot 38 @30 W	16
[Symbol]	Altman R40 4 Circ 6ft 4 @12 W	
[Symbol]	NSI Colortran For Cyc 2 Cell @2 W	15
[Symbol]	USITT Practical Symbol 11 @0 W	

ACCESSORY & SFX LIST	
[Symbol]	Look Solutions Unique 2.1 @1500 W

Typical Notation

Unit Number
Change

General Notes

- MEASUREMENTS MADE FROM CENTER OF PIPE UNLESS OTHERWISE NOTED
- ALL UNITS ARE TO HAVE APPROPRIATE FOCUS SLACK AND APPROPRIATE SAFETY HARDWARE
- PLEASE HAVE SPARE R19 & R32 AVAILABLE AT FOCUS
- ALL SIDE-ARMED OVERHEAD UNITS HUNG 1'-0" FROM SIDEARM CLAMP
- ALL FROST SHOULD BE PLACED ON THE SIDE CLOSEST TO LENS OF FIXTURE

THIS DRAWING REPRESENTS DESIGN INTENT, VISUAL CONCEPTS, AND CONSTRUCTION SUGGESTIONS ONLY. IT DOES NOT REPLACE THE KNOWLEDGE AND ADVICE OF A LICENSED STRUCTURAL ENGINEER.

THE DESIGNER IS UNQUALIFIED TO DETERMINE STRUCTURAL APPROPRIATENESS OF THIS DESIGN AND WILL NOT ASSUME RESPONSIBILITY FOR IMPROPER ENGINEERING, IMPLEMENTATION, OR HANDLING OF THE ELEMENTS OF THIS DESIGN.

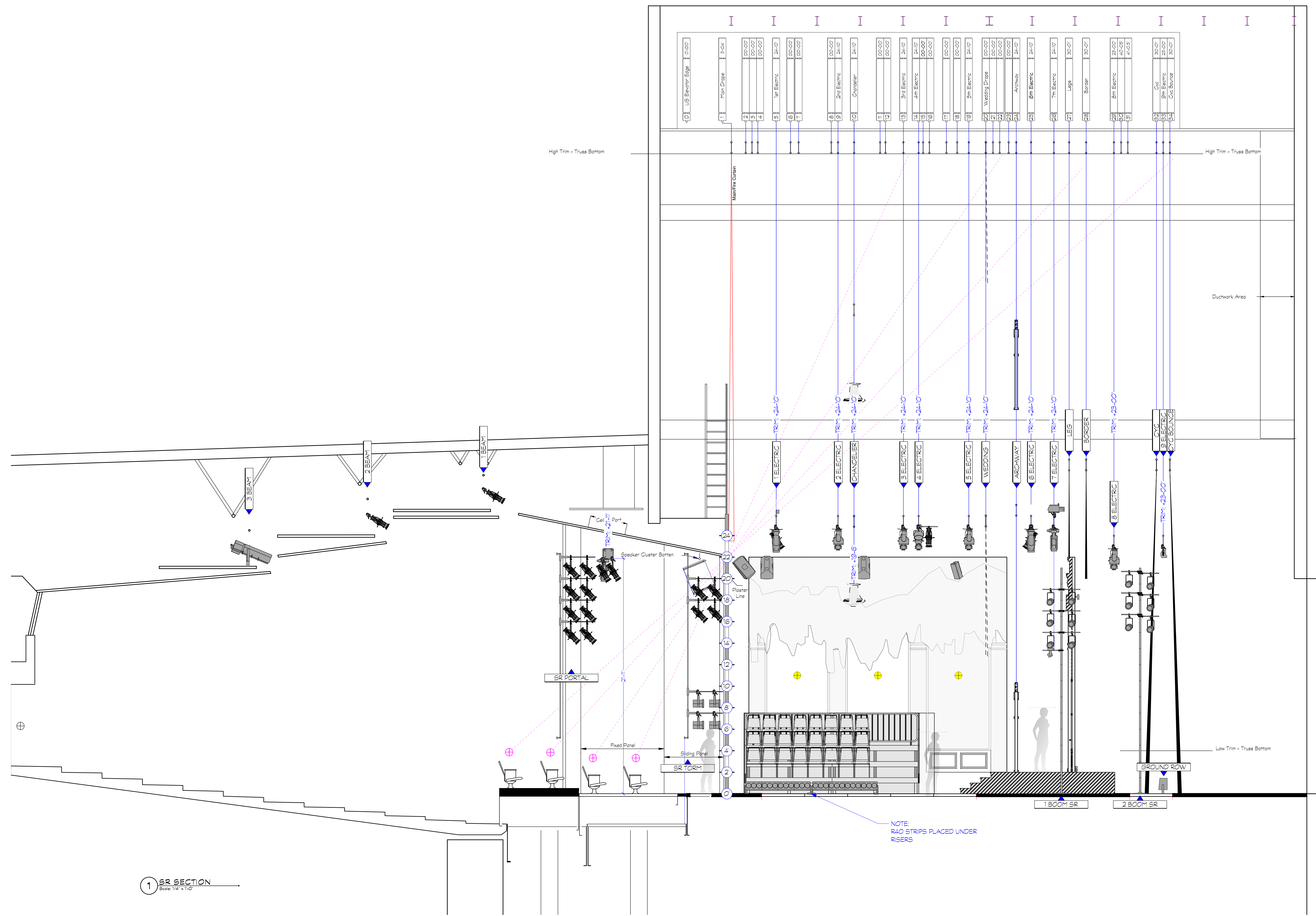
THE IMPLEMENTATION OF THIS DESIGN MUST COMPLY WITH THE MOST STRINGENT APPLICABLE FEDERAL AND LOCAL SAFETY AND FIRE CODES.

Directed By: Danielle Kay
Lighting Design By: Em Moore
+1 (415) 450 5198

EMMA: NO ONE BUT HERSELF

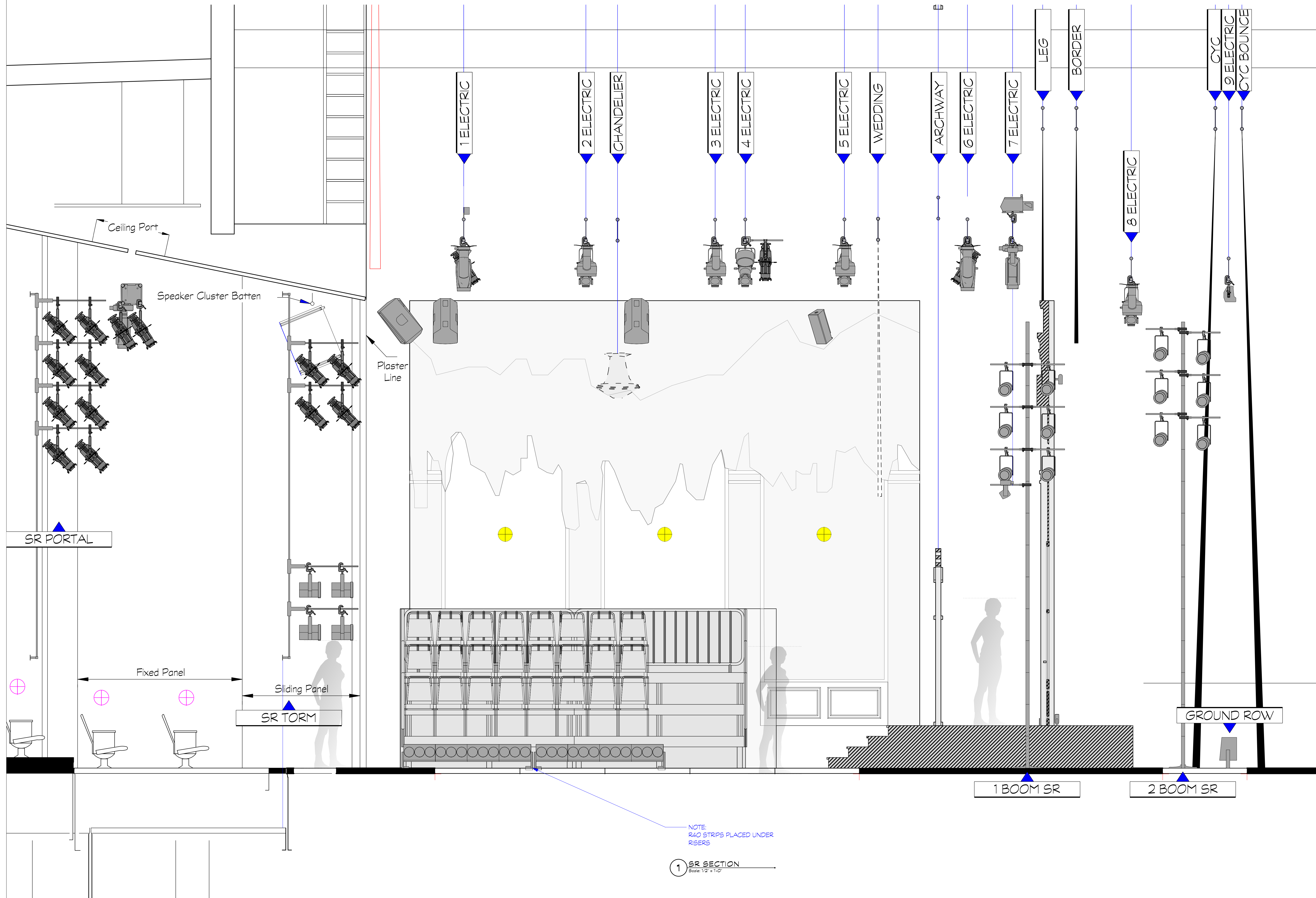
FINAL REV No. 3 MAR 15th 2026

SET ELECTRICS	
Project Manager: Christina Vacciano	Project ID: The Freud Playhouse
Drawn By: EFM	Scale: AS NOTED
Reviewed By: Libby Zamiska & Colin Corralle	Sheet No: 7
Date: 2/3/2026	of
VAN File Name: EMMA_LX_PORTFOLIO_Cen 117.dwg	9



1 SR SECTION
Scale: 1/4" = 1'-0"

INSTRUMENT LIST		
Symbol	Description	Count
	Robe Lighting Robin Forte FS @1250 W	2
	Ayrton Stradale Profile @630 W	4
	GLP Impression S500 @750 W	4
	GLP Impression X5 @710 W	8
	Chauvet Rogue R1 Wash4 @161 W	4
	Altman Spectra Cyc @100w	13
	ETC Source 4 19deg @575 W	15
	ETC Source 4 26deg @575 W	53
	ETC Source 4 36deg @575 W	44
	ETC Source 4 50deg @575 W	2
	ETC Source 4 36deg 750 W @750 W	13
	ETC Source 4 50deg 750 W @750 W	21
	ETC Source 4 70deg 750 W @750 W	2
	ETC Source4 Fresnel @750 W	8
	Altman PAR 64 WFL @91 W	2
	Selecon Compact 6 Fresnel @0.75 W	12
	Light Instr USITT PAR MR-16 Birdie-WFL @65 W	12
	Light Instr USITT 10BP @1000 W	8
	ADJ Pinspot 38 @30 W	16
	Altman R40 4 Circ 6ft 4 @12 W	4
	NSI Coloratron Far Cyc 2 Cell @2 W	15
	USITT Practical Symbol 11 @0 W	11
ACCESSORY & SFX LIST		
	Look Solutions Unique 2.1 @1500 W	1
Typical Notation		
	Unit Number	
	Chang	
General Notes		
1) MEASUREMENTS MADE FROM CENTER OF PIPE UNLESS OTHERWISE NOTED		
2) ALL UNITS ARE TO HAVE APPROPRIATE FOCUS SLACK AND APPROPRIATE SAFETY HARDWARE		
4) PLEASE HAVE SPARE R119 & R132 AVAILABLE AT FOCUS		
5) ALL SIDE-ARMED OVERHEAD UNITS HUNG 1'-00" FROM SIDEARM CLAMP		
6) ALL FROST SHOULD BE PLACED ON THE SIDE CLOSEST TO LENS OF FIXTURE		
THIS DRAWING REPRESENTS DESIGN INTENT, VISUAL CONCEPTS, AND CONSTRUCTION SUGGESTIONS ONLY. IT DOES NOT REPLACE THE KNOWLEDGE AND ADVICE OF A LICENSED STRUCTURAL ENGINEER.		
THE DESIGNER IS UNQUALIFIED TO DETERMINE STRUCTURAL APPROPRIATENESS OF THIS DESIGN AND WILL NOT ASSUME RESPONSIBILITY FOR IMPROPER ENGINEERING, IMPLEMENTATION, OR HANDLING OF THE ELEMENTS OF THIS DESIGN.		
THE IMPLEMENTATION OF THIS DESIGN MUST COMPLY WITH THE MOST STRINGENT APPLICABLE FEDERAL AND LOCAL SAFETY AND FIRE CODES.		
Directed By: Danielle Kay Lighting Design By: Em Moore +1 (415) 450 5198		
EMMA: NO ONE BUT HERSELF		
FINAL REV No. 3 MAR 15th 2026		
SR SECTION		
Project Manager Christina Vacciano	Project ID The Freud Playhouse	
Drawn By EFM	Scale 1/4" = 10'	
Reviewed By Libby Zamiska & Colin Corralle	Sheet No. 8	
Date 2/3/2026		
VAN File Name EMMA_SR_SECTION.dwg		9



INSTRUMENT LIST		
Symbol	Description	Count
	Robe Lighting Robin Forte FS @1250 W	2
	Ayrton Straddle Profile @630 W	4
	GLP Impression 5500 @750 W	4
	GLP Impression XS @710 W	8
	Chauvet Rogue R1 Wash4 @161 W	4
	Altman Spectra Cyc @100w	13
	ETC Source 4 19deg @575 W	15
	ETC Source 4 26deg @575 W	53
	ETC Source 4 36deg @575 W	44
	ETC Source 4 50deg @575 W	2
	ETC Source 4 36deg 750 W @750 W	13
	ETC Source 4 50deg 750 W @750 W	21
	ETC Source 4 70deg 750 W @750 W	2
	ETC Source4 Fresnel @750 W	8
	Altman PAR 64 WFL @1 W	2
	Selecon Compact 6 @0.75 W	12
	Light Instr USITT PAR MR-16 Birdie-WFL @65 W	12
	Light Instr USITT 10BP @1000 W	8
	ADJ Pinspot 38 @30 W	16
	Altman R40 4 Circ 6ft 4 @12 W	4
	NSI Colortran Far Cyc 2 Cell @2 W	15
	USITT Practical Symbol 11 @0 W	11
ACCESSORY & SFX LIST		
	Look Solutions Unique 2.1 @1500 W	1
Typical Notation		
	Unit Number	
	Crating	
General Notes		
1) MEASUREMENTS MADE FROM CENTER OF PIPE UNLESS OTHERWISE NOTED		
2) ALL UNITS ARE TO HAVE APPROPRIATE FOCUS SLACK AND APPROPRIATE SAFETY HARDWARE		
4) PLEASE HAVE SPARE R19 & R12 AVAILABLE AT FOCUS		
5) ALL SIDE-ARMED OVERHEAD UNITS HUNG 1-00" FROM SIDEARM CLAMP		
6) ALL FROST SHOULD BE PLACED ON THE SIDE CLOSEST TO LENS OF FIXTURE		
THIS DRAWING REPRESENTS DESIGN INTENT, VISUAL CONCEPTS, AND CONSTRUCTION SUGGESTIONS ONLY. IT DOES NOT REPLACE THE KNOWLEDGE AND ADVICE OF A LICENSED STRUCTURAL ENGINEER.		
THE DESIGNER IS UNQUALIFIED TO DETERMINE STRUCTURAL APPROPRIATENESS OF THIS DESIGN AND WILL NOT ASSUME RESPONSIBILITY FOR IMPROPER ENGINEERING, IMPLEMENTATION, OR HANDLING OF THE ELEMENTS OF THIS DESIGN.		
THE IMPLEMENTATION OF THIS DESIGN MUST COMPLY WITH THE MOST STRINGENT APPLICABLE FEDERAL AND LOCAL SAFETY AND FIRE CODES.		
Directed By: Danielle Kay Lighting Design By: Em Moore +1 (415) 450 5198		
EMMA: NO ONE BUT HERSELF		
FINAL REV No. 3 MAR 15th 2026		
SR SECTION 1/2" SCALE		
Project Manager Christina Vacciano	Project ID The Freud Playhouse	
Drawn By EFM	Scale 1/2" = 10'	
Reviewed By Libby Zamiska & Colin Coralle	Sheet No. 9	
Date 2/3/2026		
VAN File Name EMMA_LX_PORTFOLIO_Cen 117.dwg		